



Successful Trail Protection Using Land Trusts, Trail Organizations, and Agency Partners

15th Conference on National Scenic and Historic Trails
Franklin, Tennessee
June 29th, 2015

Don Owen, Lands Trails and Parks LLC

Jay Leutze, Southern Appalachian Highlands Conservancy

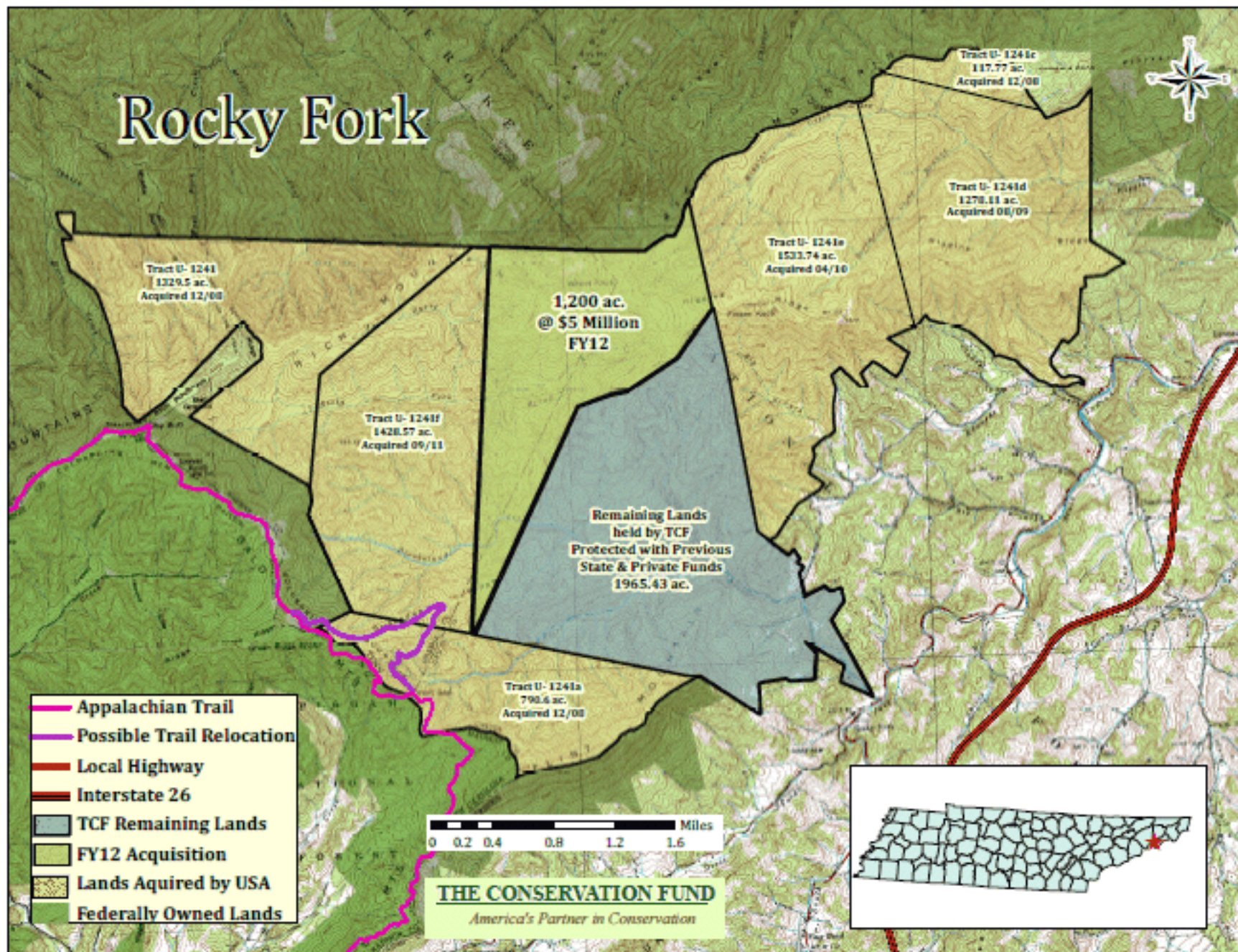
Kate Wanner, Trust for Public Lands

Mike Wollmer, ice Age Trail Alliance

Chuck Roe, Southern Conservation Partners

Don King, National Park Service

Rocky Fork



- Appalachian Trail
- Possible Trail Relocation
- Local Highway
- Interstate 26
- TCF Remaining Lands
- FY12 Acquisition
- Lands Aquired by USA
- Federally Owned Lands

0 0.2 0.4 0.8 1.2 1.6 Miles

THE CONSERVATION FUND
America's Partner in Conservation





THE
TRUST
For
OUR
LAND

Protecting National Trails with The
Trust for Public Land

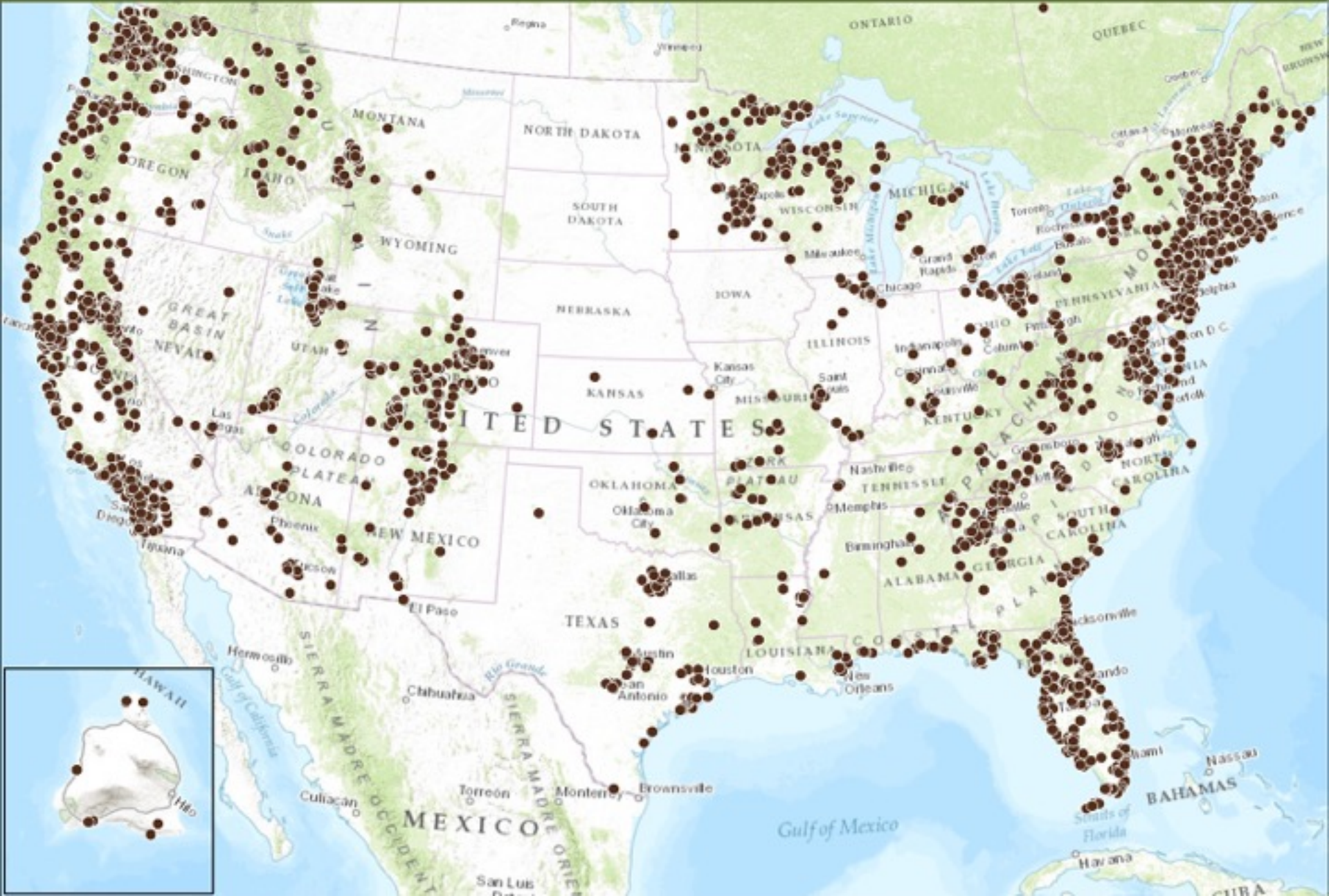
Case Study: Appalachian Trail
Corridor, Stamford, VT

THE TRUST *for* PUBLIC LAND

LAND FOR PEOPLE

PROJECTS COMPLETED BY THE TRUST FOR PUBLIC LAND

1973-2015



323 PROJECTS WITHIN A 1/2 MILE OF A NATIONAL TRAIL

COMPLETED BY THE TRUST FOR PUBLIC LAND



Green Mountain Partnership



THE
TRUST
for
PUBLIC
LAND



**CATAMOUNT
TRAIL
ASSOCIATION**

**VERMONT
BACKCOUNTRY
ALLIANCE**



Appalachian Trail Corridor Stamford, Pownal, VT



The Threat: 383 acres owned by the City of North Adams to be sold at public auction in 6 weeks

The Resource:

- 1 mile of the Appalachian Trail
- Seth Warner Shelter
- Broad Brook: water source for Seth Warner Shelter
- inholdings in Green Mountain National Forest
- State-endangered American marten
- Red Spruce-Cinnamon Fern Swamp
- Improves access to existing National Forest land



Appalachian Trail Corridor Stamford, Pownal, VT



Existing Easement: National Forest holds a conservation easement along the Appalachian National Scenic Trail through this section.

But...

- Easement only 100 feet on either side of trail (current rec: 1/2 mile)
- Allows unlimited crossings by roads and driveways
- Allows commercial logging within easement area (anything over 10 inch dbh)
- Development upstream from Seth Warner shelter could severely impact quality of the drinking water source at the shelter
- = One of the most threatened sections of the A.T. in the country

Appalachian Trail Corridor ~ Stamford & Pownal, VT



Green Mountain Club, Appalachian Trail Conservancy, Trust for Public Land and Green Mountain National Forest consider this acquisition one of the highest priorities along the Appalachian National Scenic Trail in the State of Vermont.

Up for Auction in 6 weeks!



How do we have time to find acquisition funds and handle due diligence?

- Title
- Environmental Phase I
- Appraisal
- Survey issues
- Minerals Determination

Conservation Buyer ~ Our Hero!



- Quick estimate of value
- Quick title search and site visit
- Cons Buyer takes on some risk
- Secures property until Trust for Public Land can work through all the details necessary for adding this to Green Mountain National Forest

Almost there!



- Secured leftover LWCF funding for GMNF from FY2010.
- Uh, oh! These funds borrowed by another National Forest to close a project ready to close.
- Applied for LWCF FY16 funds through National Trails Collaborative, no luck.
- High priority for Region 9, so LWCF funds were borrowed back from another NF
- Expect to close by September!



Eggleston-Muir Land Dedication

June 13, 2015



JOHN MUIR

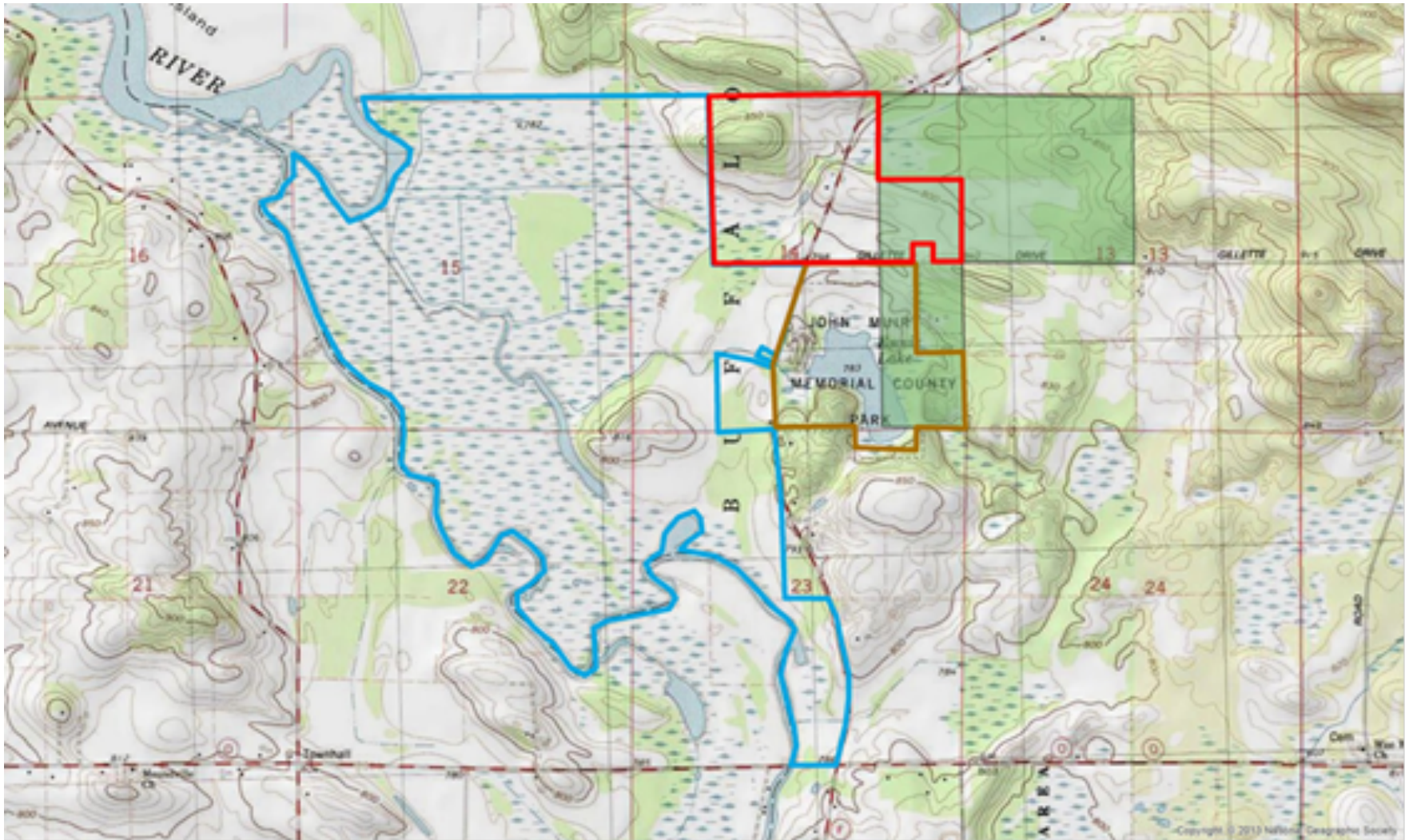


BESSIE EGGLESTON

LAND PROTECTION PARTNERS



Daniel Muir Farm – Green shading



Challenges



Funding and Timing

- Wisconsin DNR pay ½ of lowest appraisal, sellers wanted higher value of two appraisals.
- Sellers wanted it done before matriarch passed away and estate took over. Despite her passing, the estate was easier to work with than initially thought.
- Gap in funding was made-up with funding from the Natural Resources Damages Assessment Program. This process took us past the deadline for closing. Took out bridge financing via The Conservation Fund.
- 10 different partners is a good thing...but still challenging.

Muir Property, Marquette Co



Future Management



< Native Sedge Meadow



Interpretive Kiosk >



Appalachian Trail-Campbell Family-Spy Rock

Partners-The Conservation Fund, U.S.
Forest Service, Appalachian Trail
Conservancy, National Park Service and
the Campbell family.























