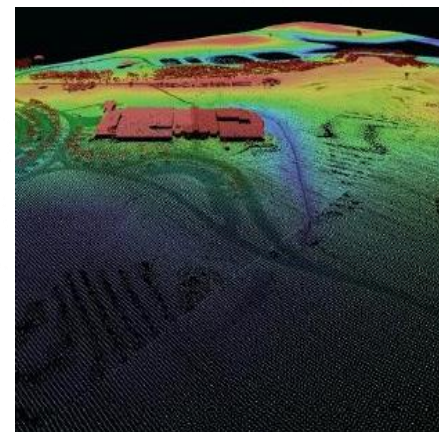
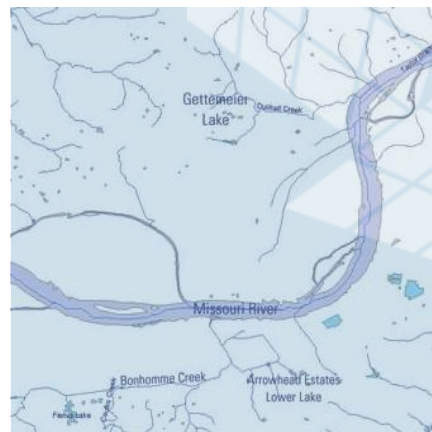
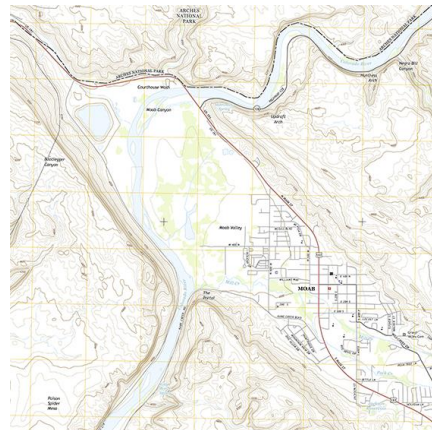




National Digital Trails Project - Demo and Briefing



5/20/2019
USGS National Geospatial Program
National Trails System Network



Introduction

2

Topics

Department of Interior vision

National Digital Trails project

Trails Decision Support Tool

Aggregated trails

Application for trails updates



A scenic mountain landscape. In the foreground, a dirt trail winds through tall, green grasses. The background features a deep valley with a river, surrounded by steep, forested mountains under a clear sky.

Vision:

Connect trails systems to expand recreational opportunities on the Nation's public lands

+ Background

- The USGS integrates trails data nationally from a variety of sources for publication on the US Topo map series.
- This data is stored in a geospatial database that can be used for analyses.
- Support the Department of Interior priority to increase access and expand recreational opportunities on the Nation's public lands by connecting trail systems. This vision supports the Department of the Interior (DOI) priority to support conservation stewardship.

+ 2-Year Goals to Support the Vision

5

Goal 1: Complete the development of the USGS Decision Support Tool: Trail Routing, Analysis, and Information Linkage System (TRAILS).

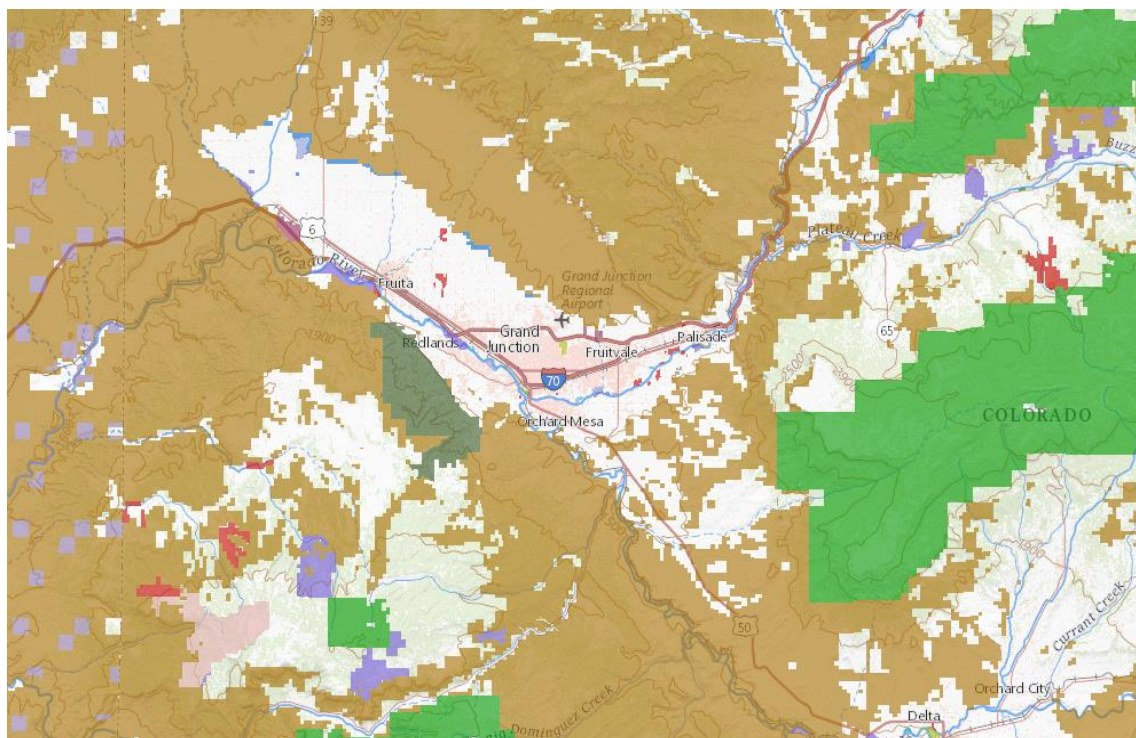
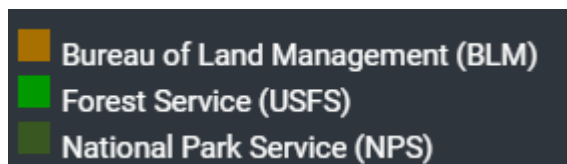
Goal 2: Improve the consistency and completeness of the **national digital trails dataset**.

Goal 3: Create a **mobile responsive application** that can be used by trail stewards, land management agencies and the public, to update and maintain trails information.

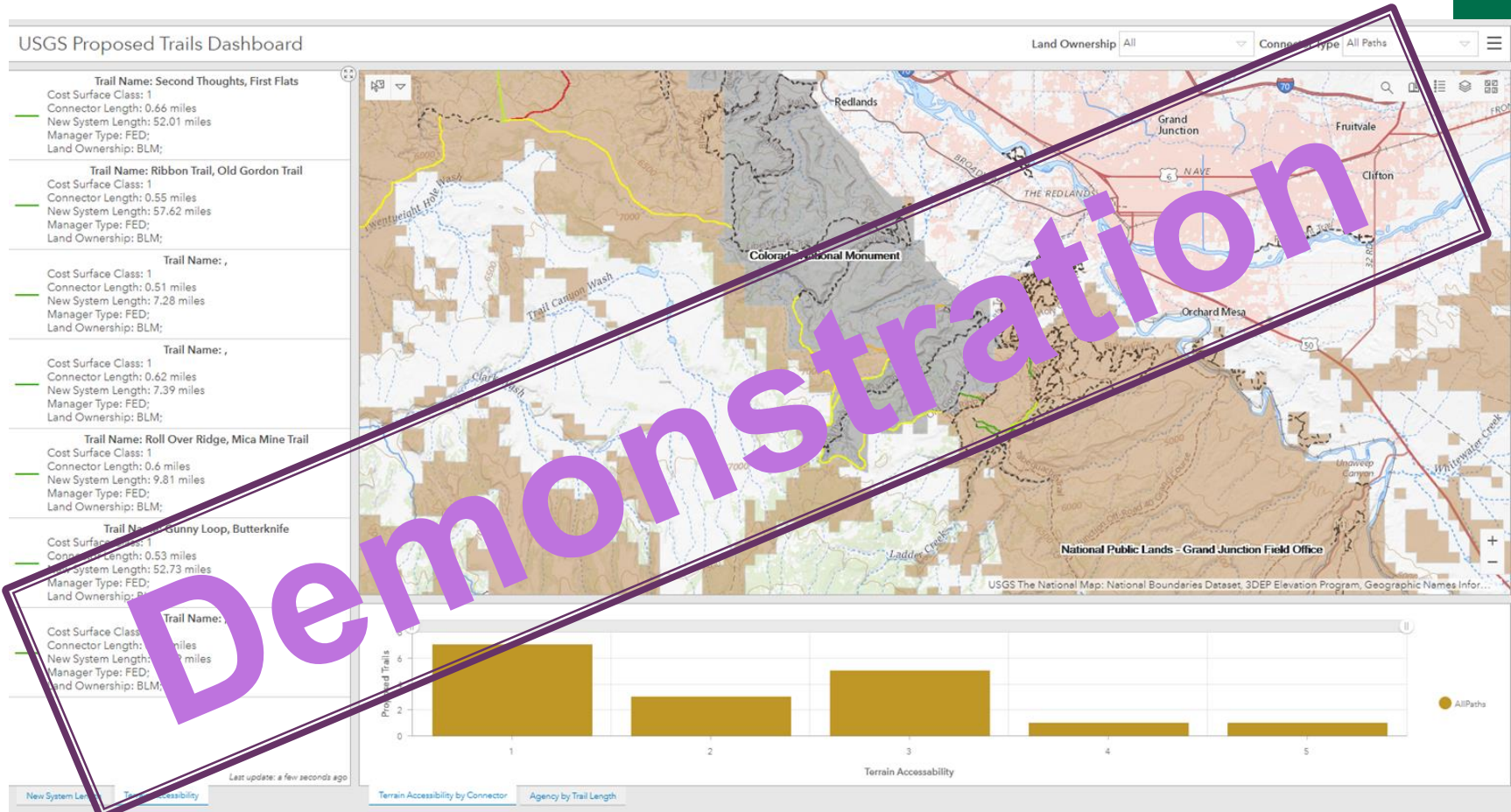
+ Prototype Project

6

- Study Area: Grand Junction, CO area
 - DOI Interest
 - Multiple Federal agency lands are adjacent and contain trails
 - National Park Service, US Forest Service, BLM have provided data to the USGS



+ Visualize and Rank Candidate Trails

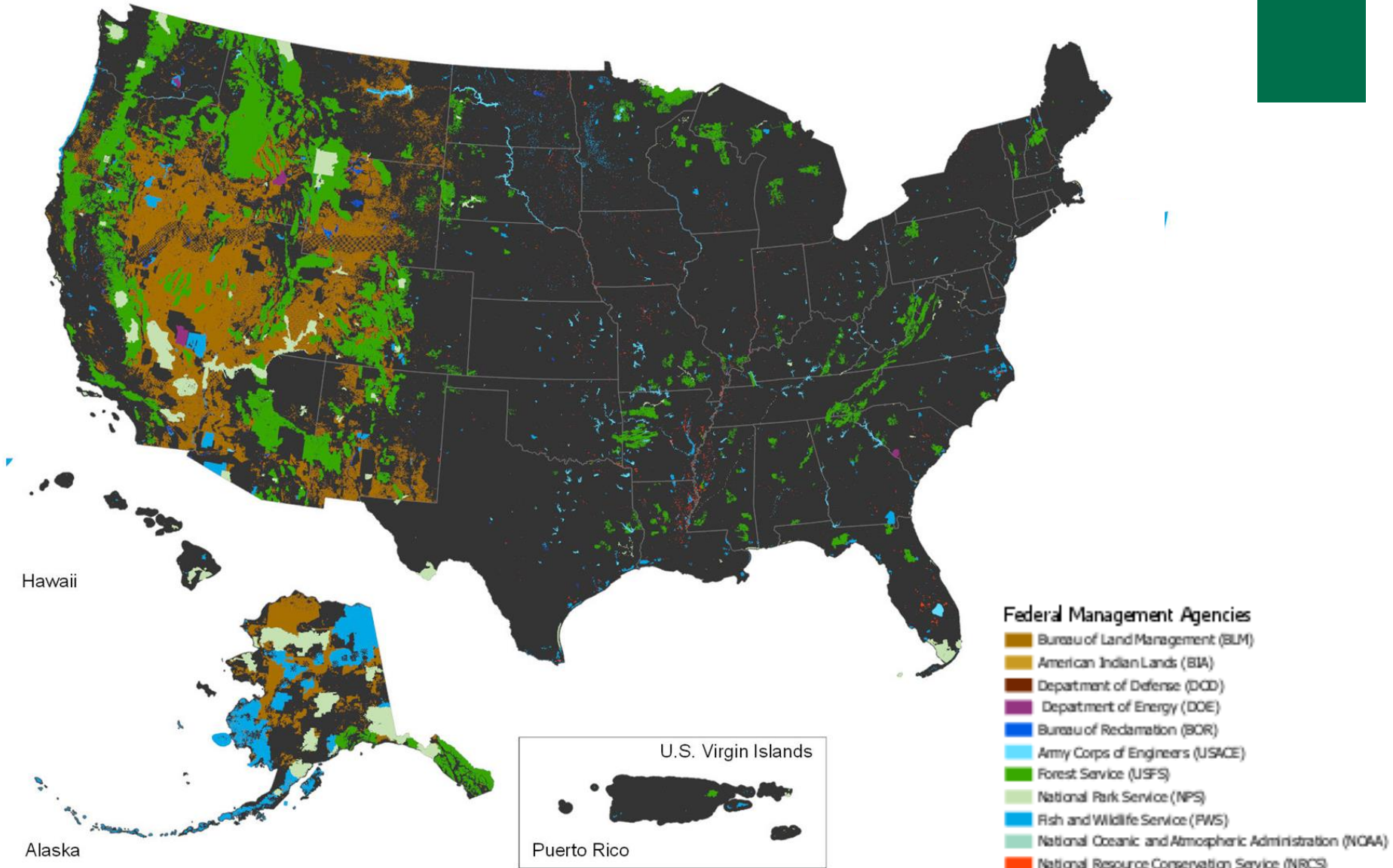


Ranked Candidate Trails are displayed in a Dashboard with an interactive map interface. A ranked list of trails is also displayed (left) along with key trail characteristics.

+ Trail Collaboration Efforts

Land Management Agency Distribution

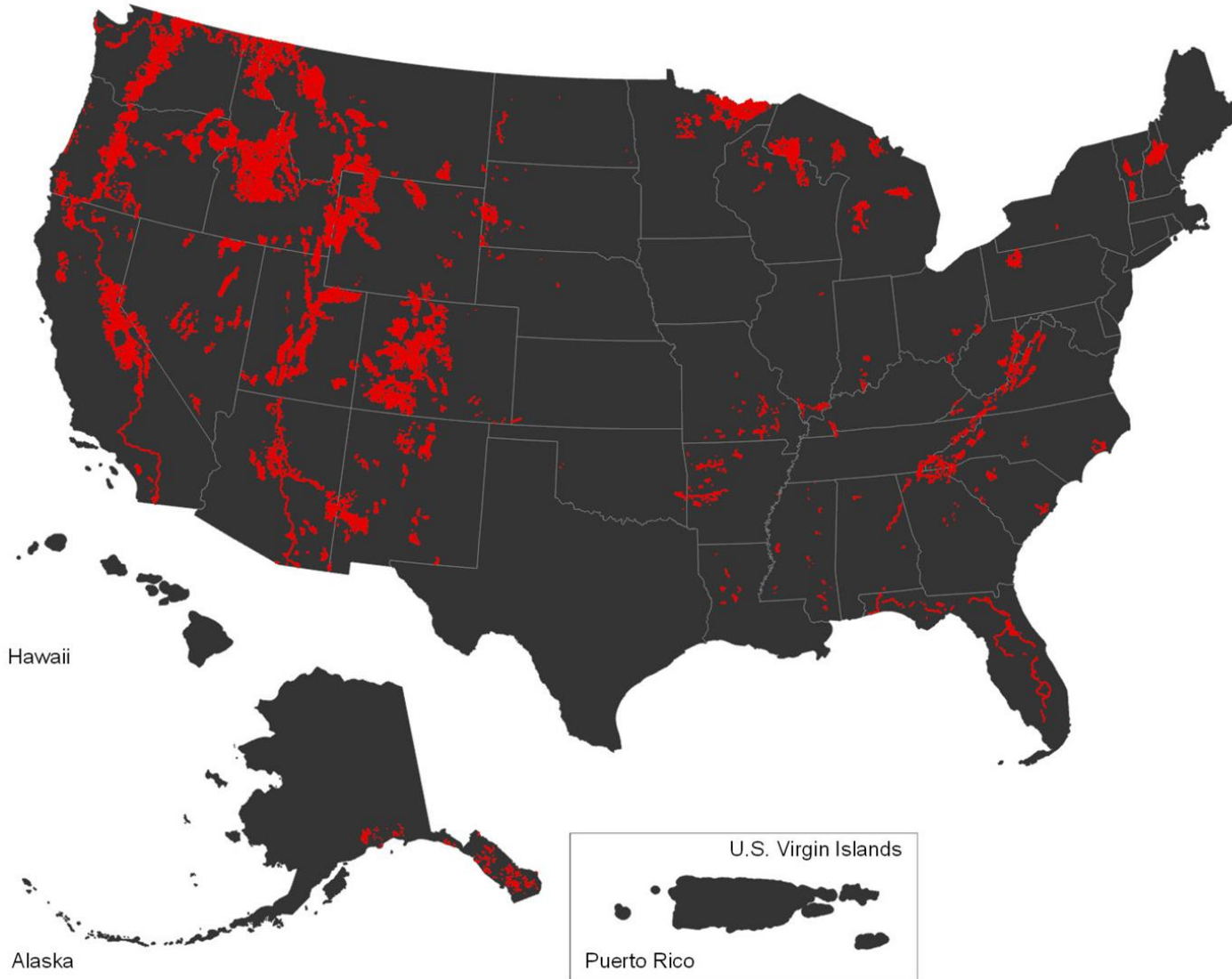
8



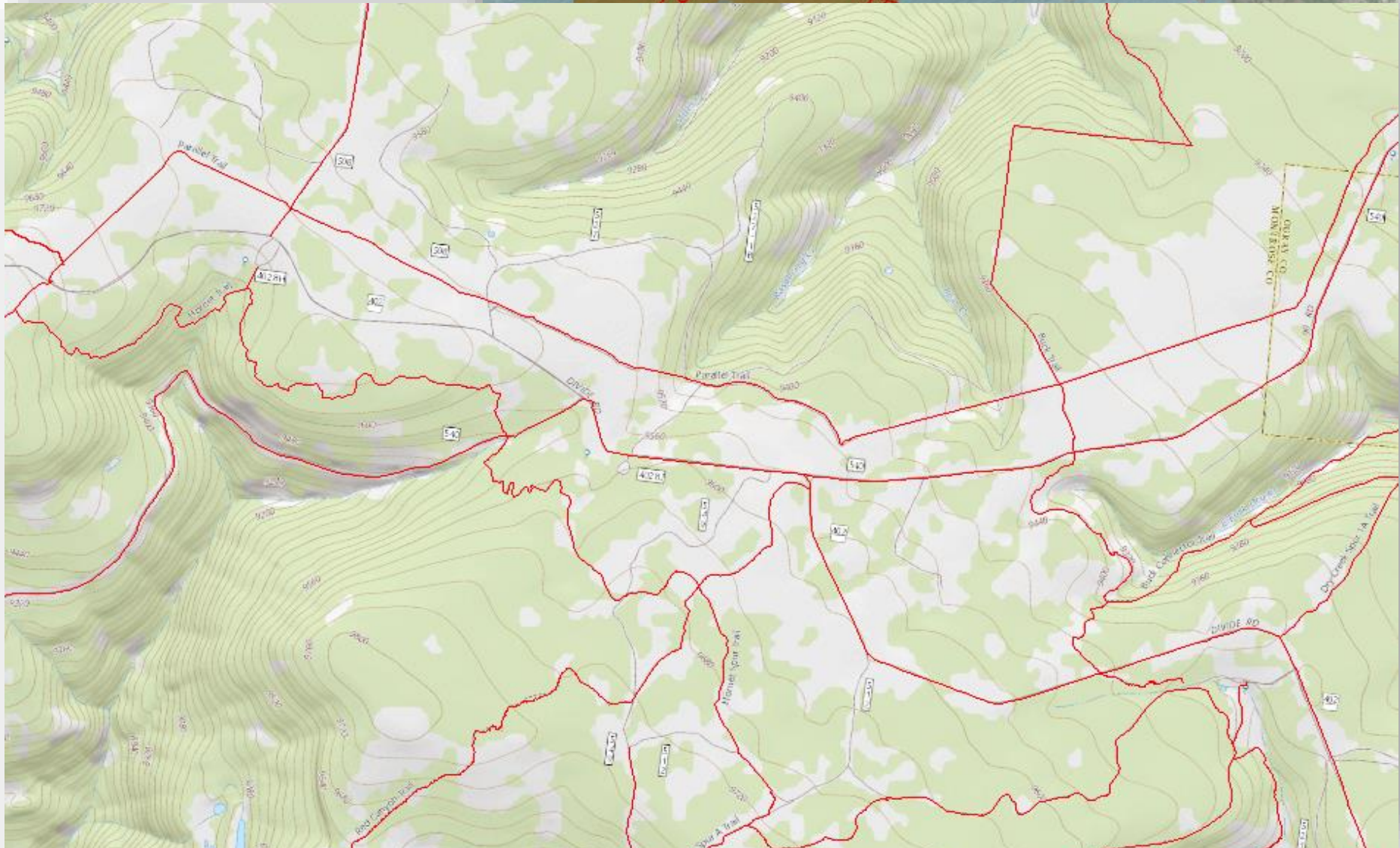
+ Trail Collaboration Efforts

U.S. Forest Service

- USFS 118,623 mi



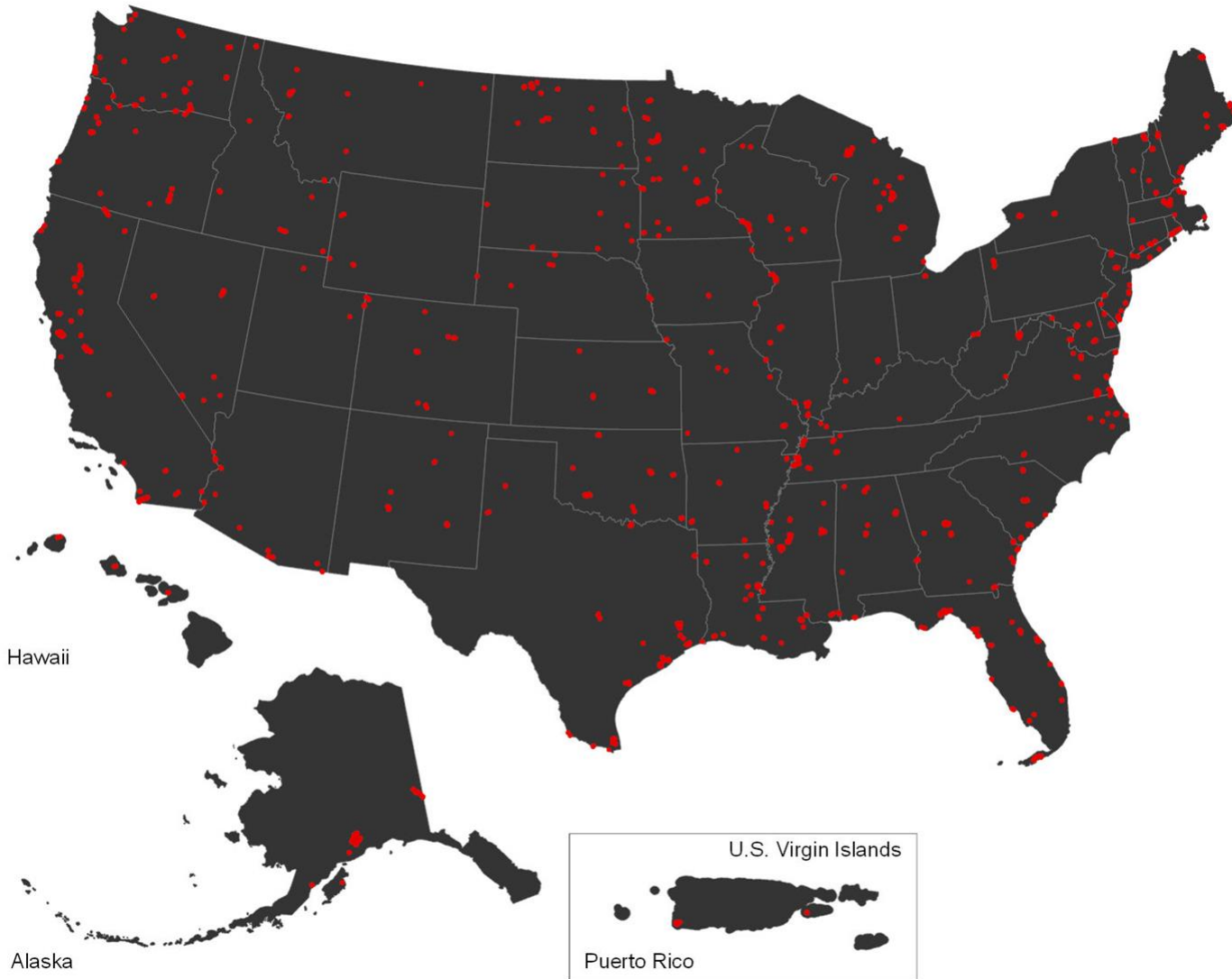
Uncompahgre National Forest



+ Trail Collaboration Efforts

Fish and Wildlife Service

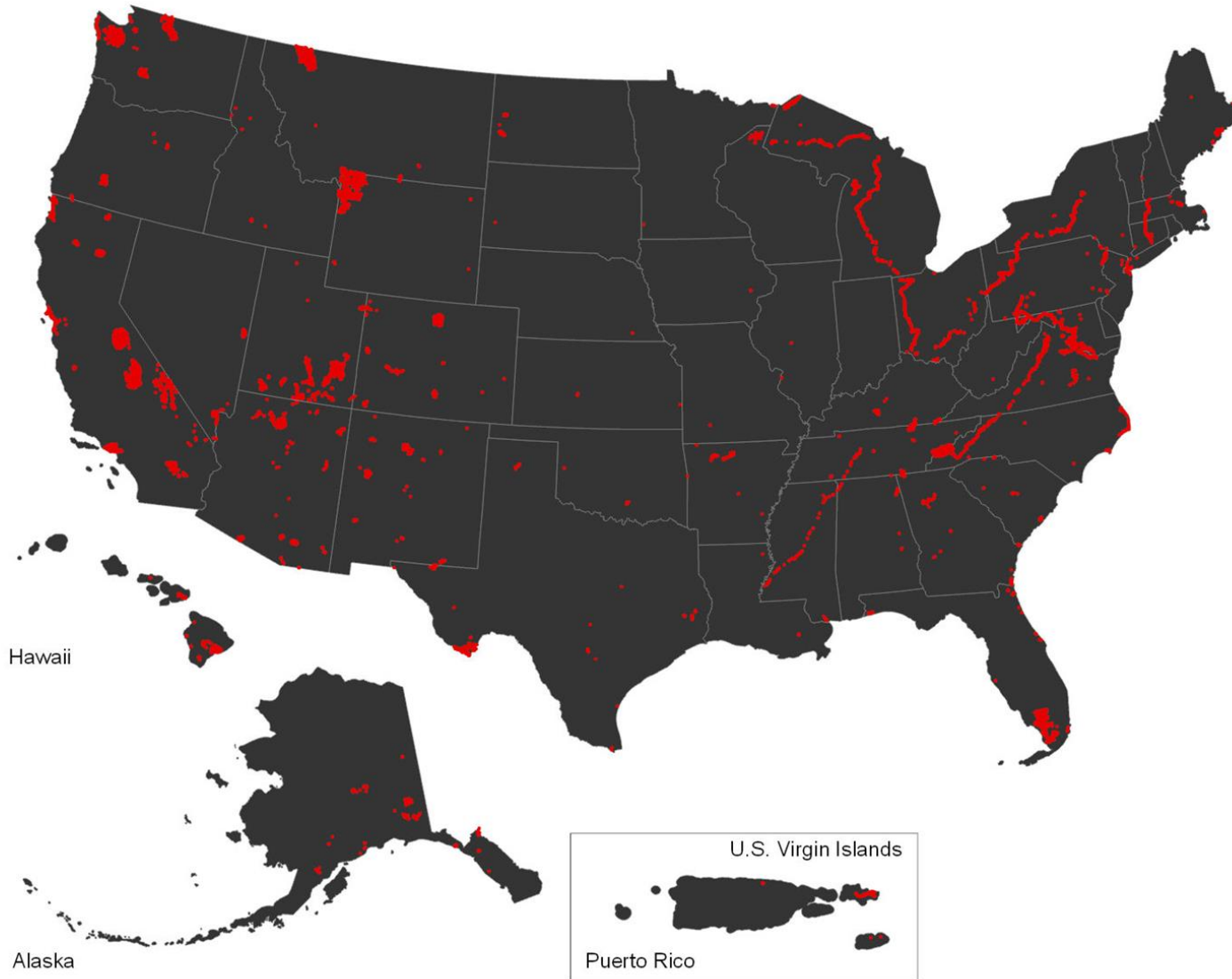
- FWS 2,317 mi



+ Trail Collaboration Efforts

National Park Service

- NPS 18,120 mi

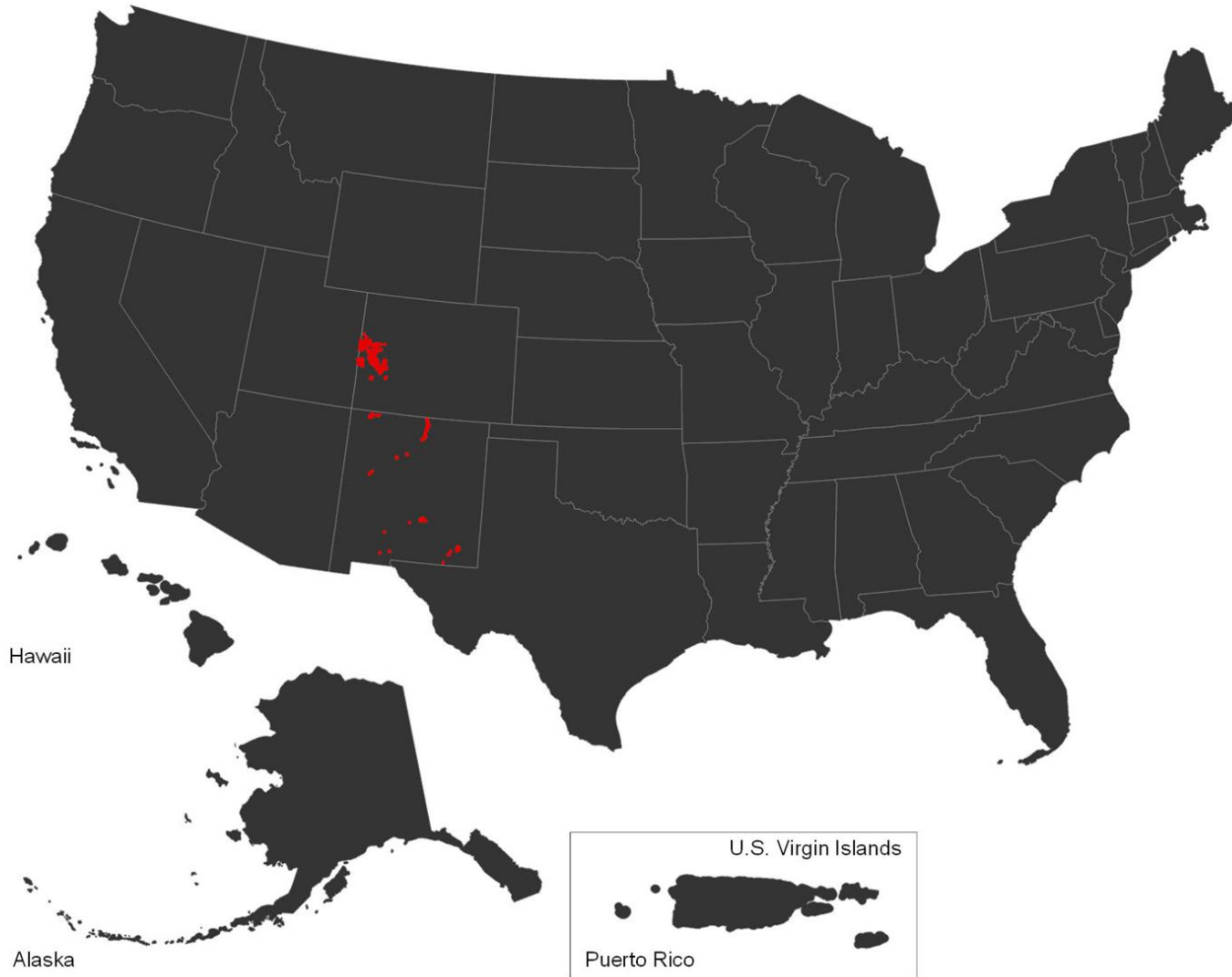


+ Trail Collaboration Efforts

13

Bureau of Land Management

- BLM 479 mi



+ Trail Collaboration Efforts

National Scenic Trail System

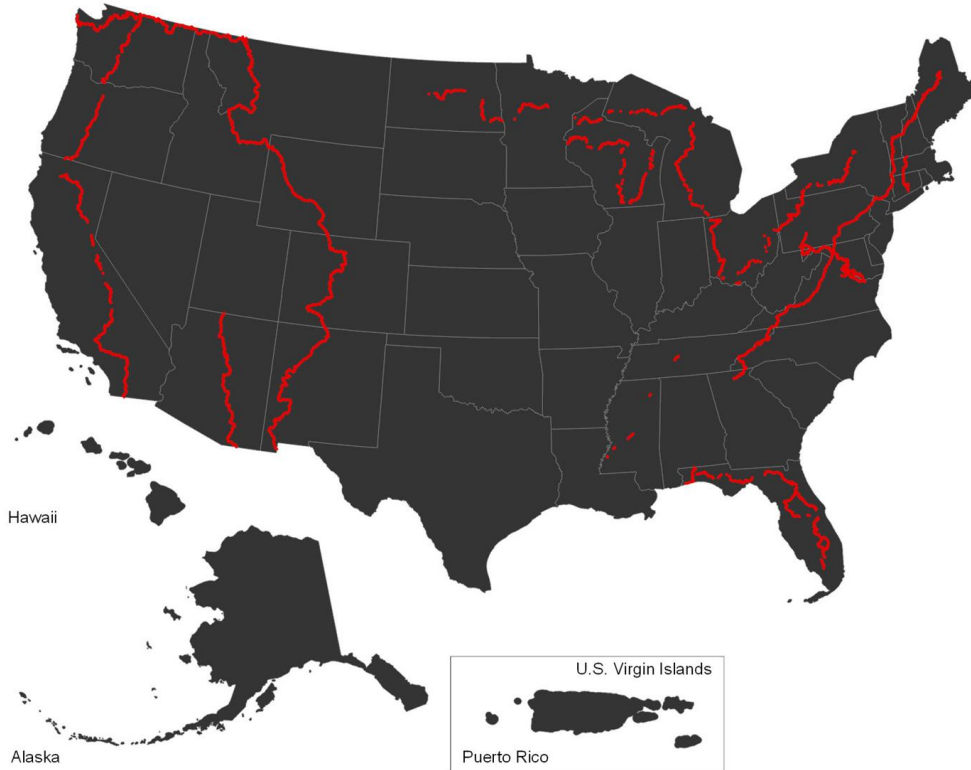
- Combined 15,507 mi



+ Trail Collaboration Efforts

National Scenic Trail System

- Combined 12,685 mi



Appalachian National Scenic Trail

- NPS 2,125 mi

North Country National Scenic Trail

- NPS 2,223 mi

Continental Divide National Scenic Trail

- Continental Divide Trail Coalition 2,170 mi

New England National Scenic Trail

- Appalachian Mountain Club and Connecticut Forest & Park Association 226 mi

Arizona National Scenic Trail

- Arizona Trail Association 785 mi

Pacific Northwest Scenic Trail

- USFS Region 6 1204 mi

Pacific Crest National Scenic Trail

- USFS 2570 mi

Florida National Scenic Trail

- USFS 1130 mi

Ice Age National Scenic Trail

- Ice Age Trail Alliance 668 mi.

Natchez Trace Scenic Trail

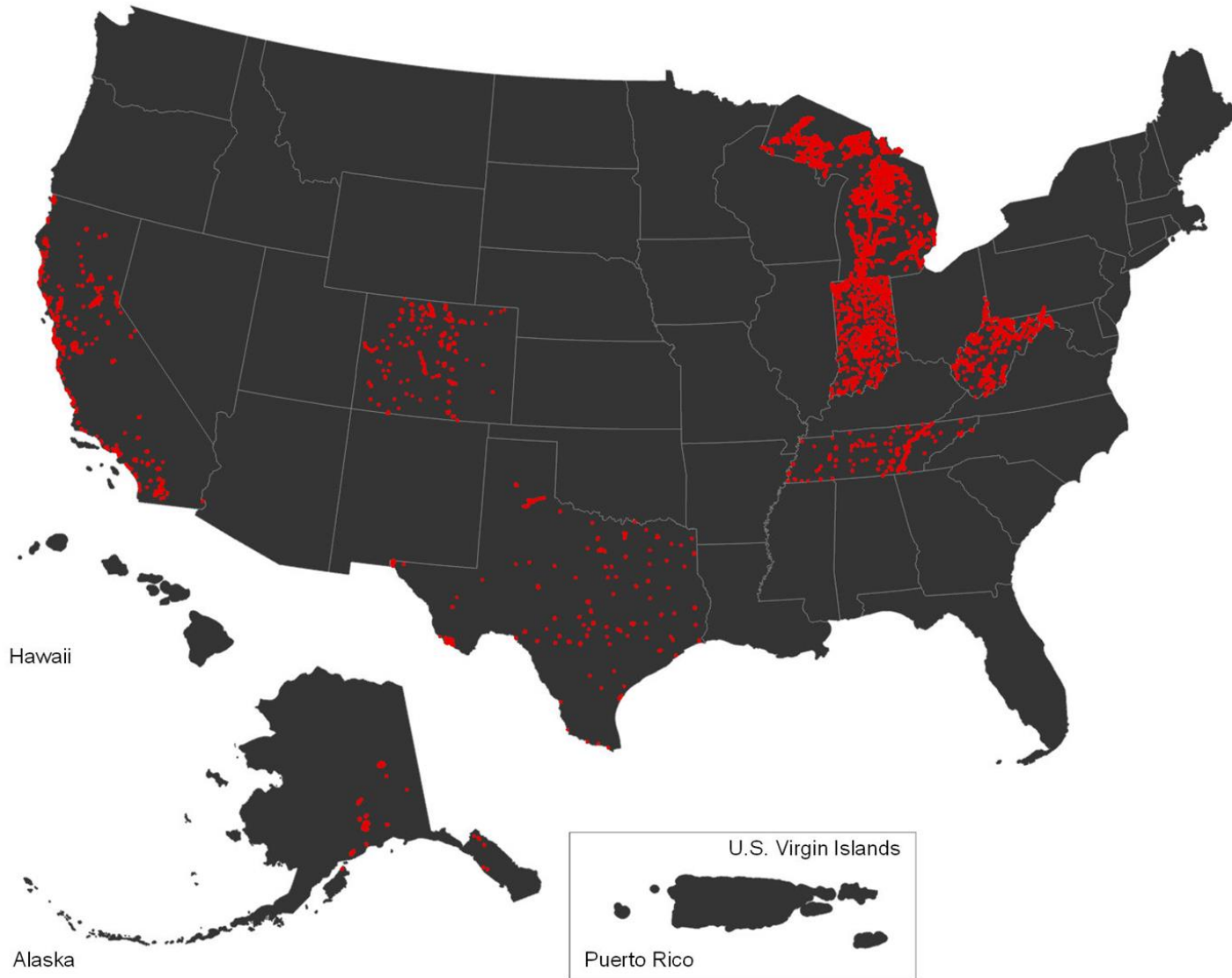
- 444 mi

Potomac Heritage Trail

- 710 mi

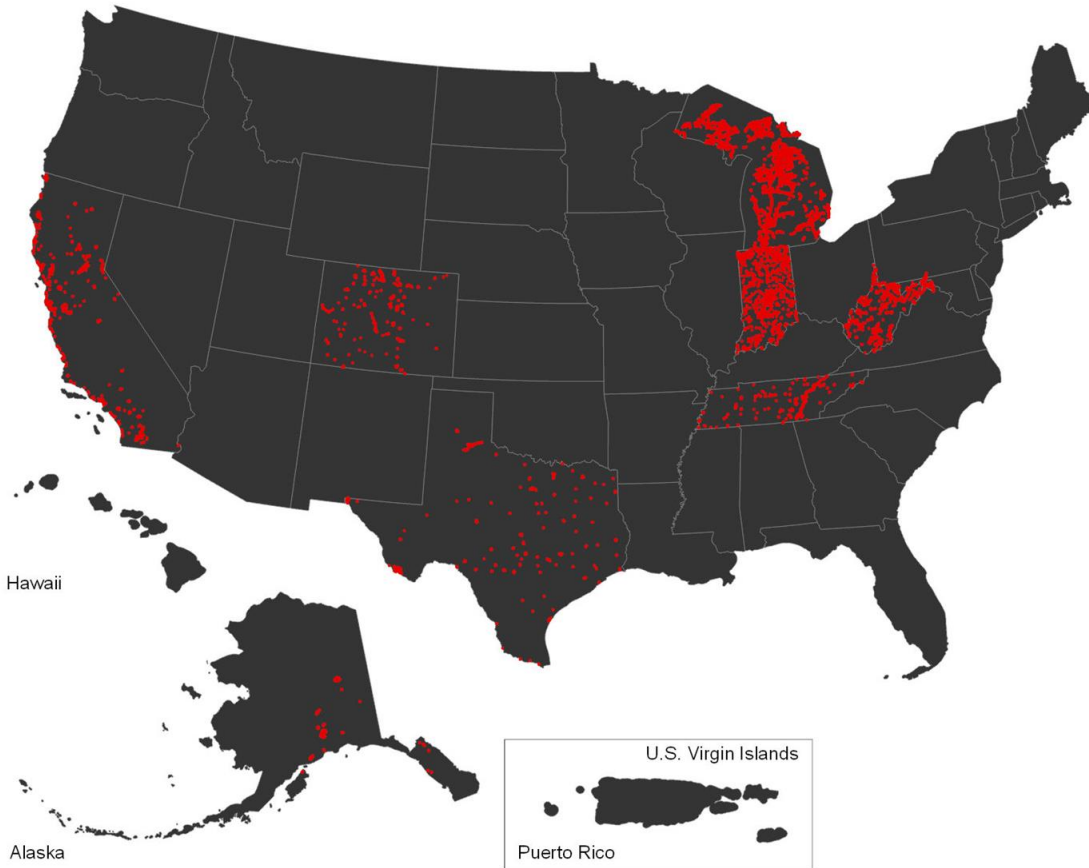
+ Trail Collaboration Efforts States

- Combined 20,428 mi



+ Trail Collaboration Efforts States

- Combined 20,428 mi



California

- 1,741 mi

Colorado

- 741 mi

Texas

- 2,170 mi

Indiana

- 3,574 mi

Michigan

- 9,009 mi

Tennessee

- 1,085 mi

West Virginia

- 2,281 mi

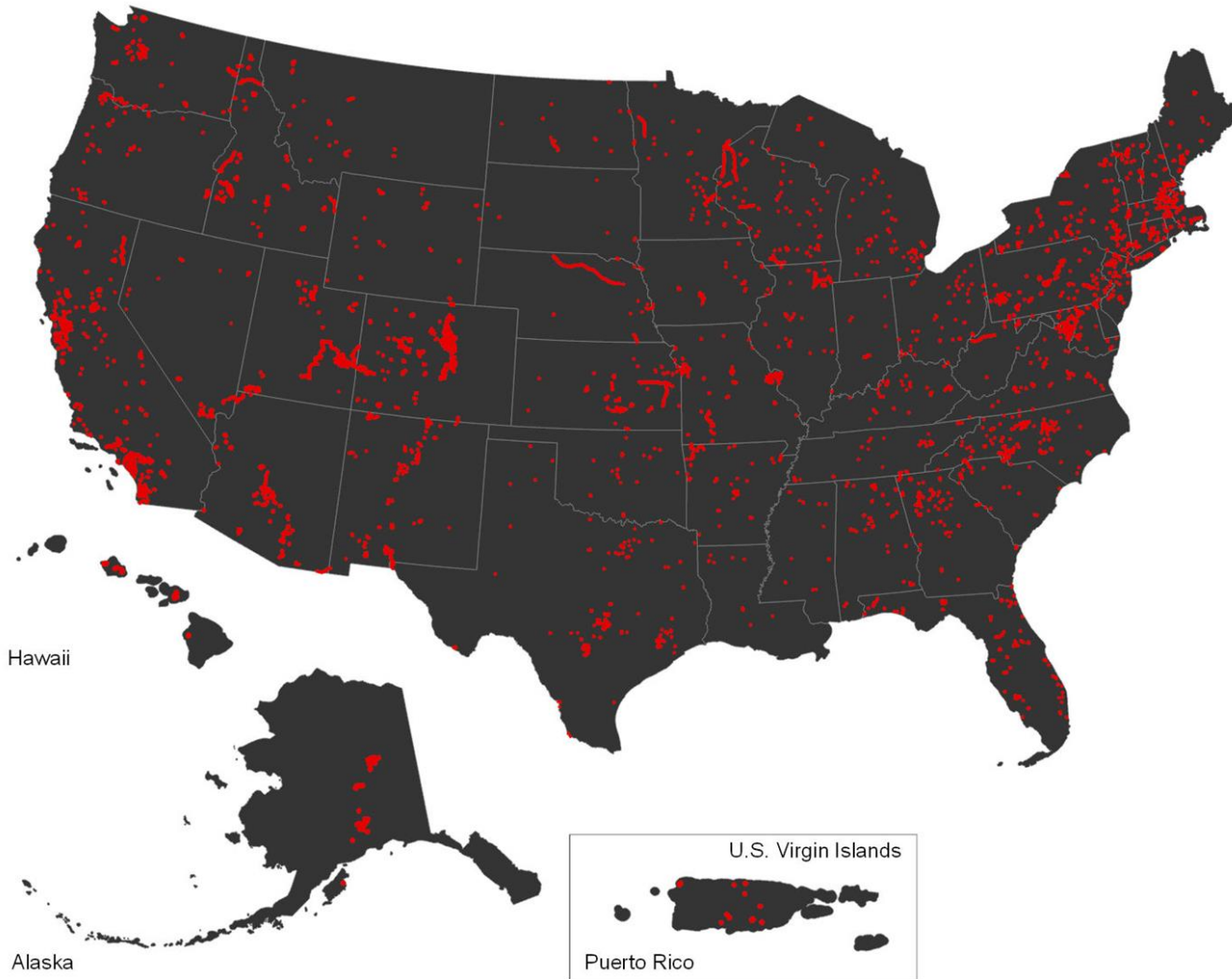
Alaska

- 692 mi

+ Trail Collaboration Efforts

Adventure Projects / International Mountain Bike Association

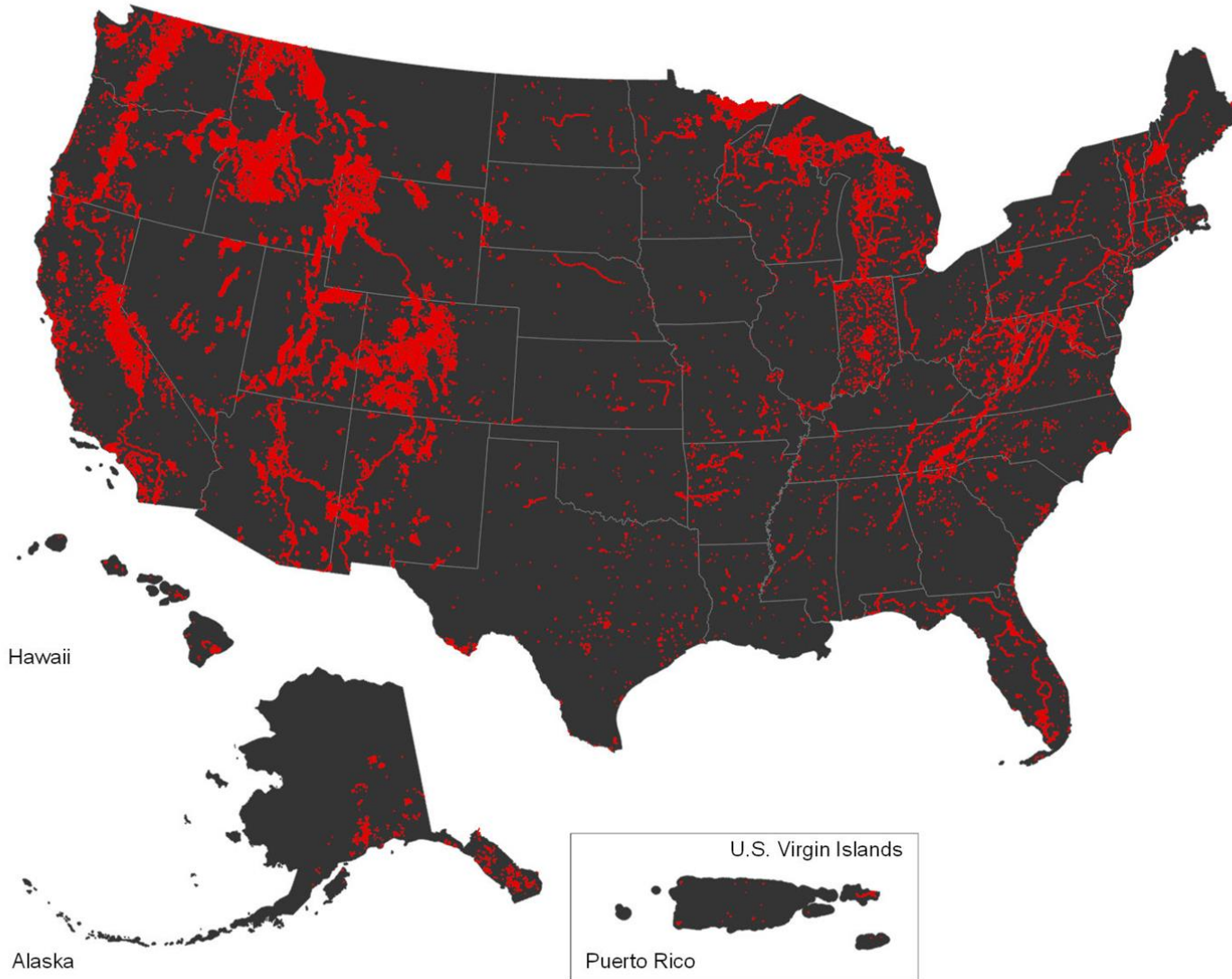
- Aggregate 25,731 mi



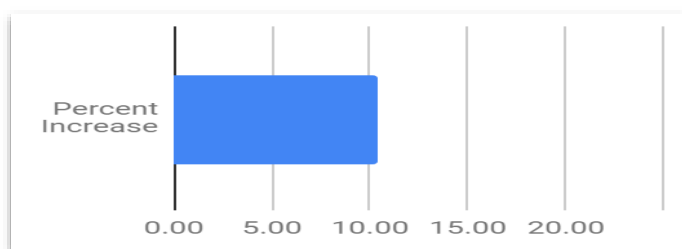
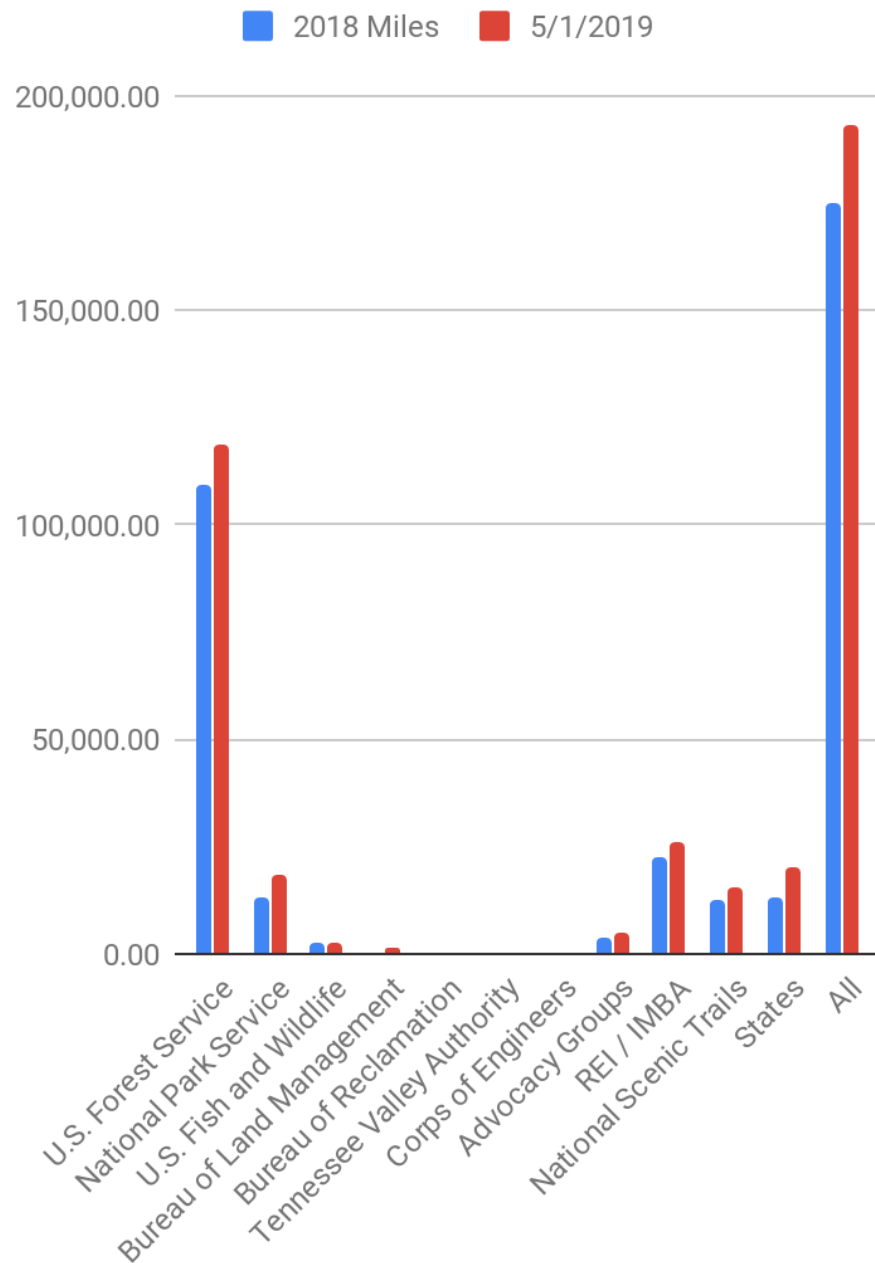
+ Trail Collaboration Efforts

Aggregated Trail System

- Aggregate 193,204 mi



Category	Agency	% Complete	2018 Miles	5/1/2019
Federal Agencies	U.S. Forest Service	90%	109,264.00	118,623.00
	National Park Service	50%	13,167.00	18,120.00
	U.S. Fish and Wildlife	100%	2,317.00	2,317.00
	Bureau of Land Management	2%	479.00	1,551.00
	Bureau of Reclamation	0%	0.00	0.00
	Tennessee Valley Authority	0%	0.00	0.00
	Corps of Engineers	0%	0.00	0.00
Private	Advocacy Groups	NA	3,849.00	4,760.00
	REI / IMBA	NA	22,222.00	25,731.00
Public & Private	National Scenic Trails	100%	12,685.00	15,507.00
Local and State	States	8%	12,847.00	20,428.00
Combined	All	38.89%	175,000.00	193,204.00



+ Recreational Points of Interest

Features

The following recreation POIs
FS, NPS, BLM, & FWS and will be added to US Topo quads

- Trailheads
- Visitors Centers
- Campgrounds
- Shelters



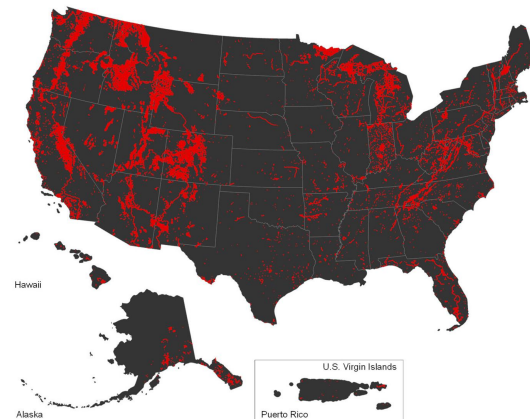
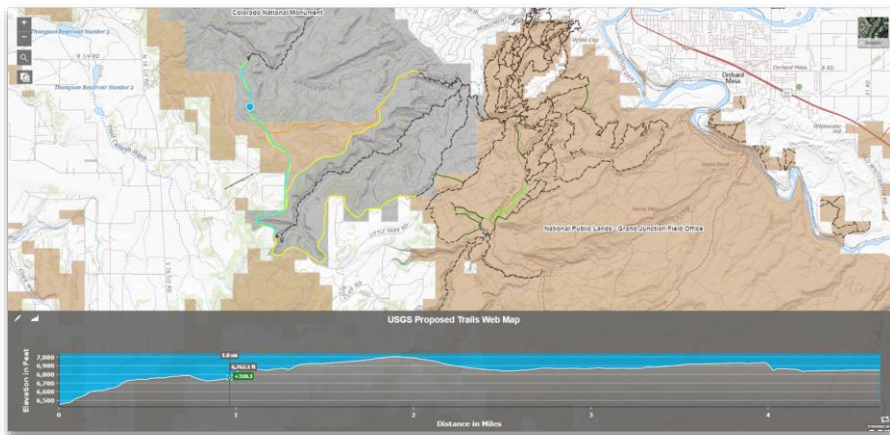
- Ranger Stations
- Park Headquarters
- Cabins
- Picnic Facilities



+ Trail Collaboration Efforts

Existing and Future Groups for Soliciting Feedback

1. Trails Decision Support Tool. Provide technical and strategic guidance on the development of this tool.
2. Data Aggregation. Develop a vision and eventually a product that better aggregates trails data from multiple agencies.
3. Collect and Improve via Crowdsourcing.



Questions/Discussion

GDMatthews@usgs.gov

