



# LAND ACQUISITION PRIORITY PARCEL MODEL



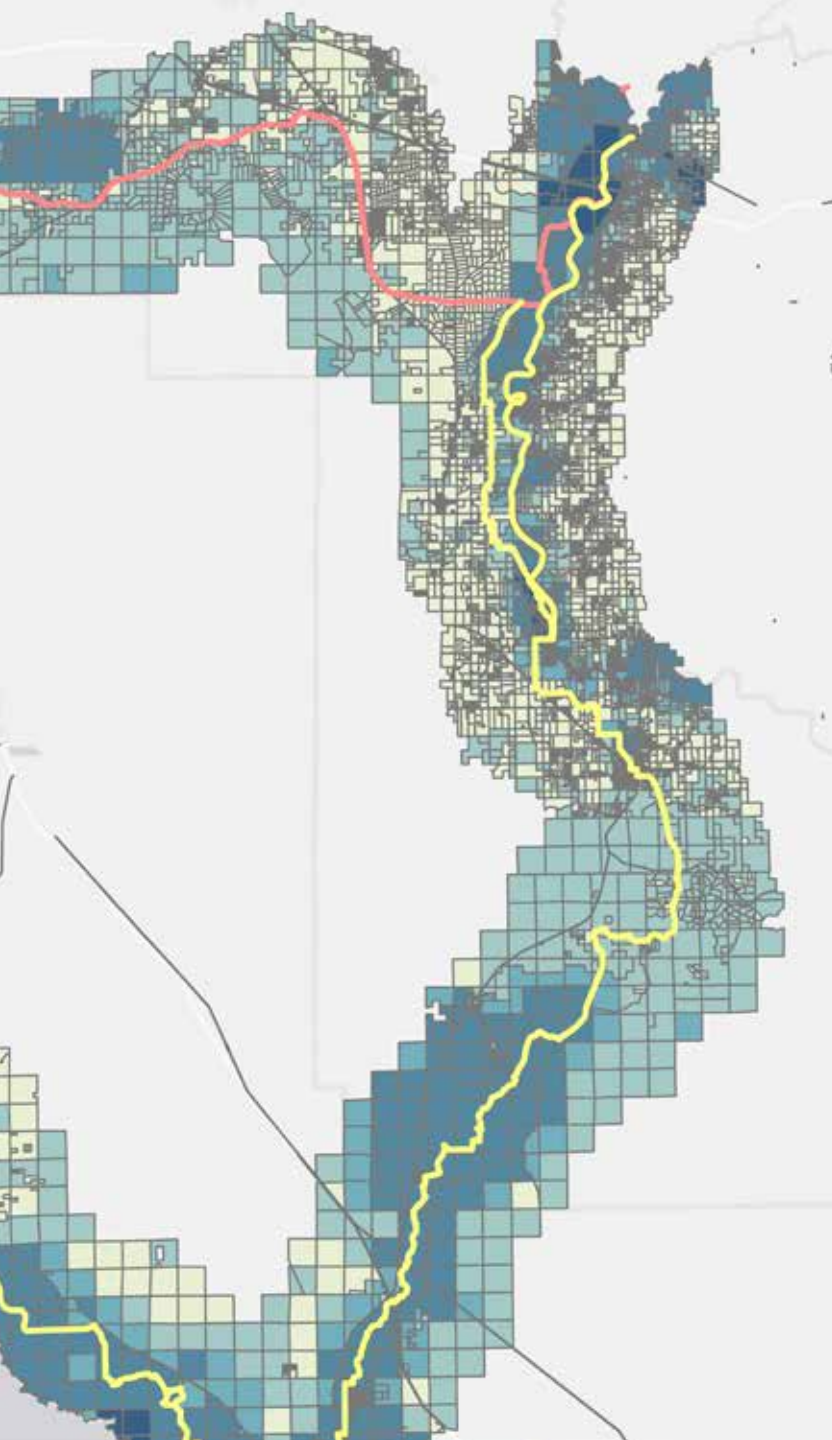




A topographic map of the state of Florida, showing its coastline and major water bodies. A winding orange line traces the path of the Florida Trail across the state, starting from the Gulf Islands National Seashore in the west and ending in the Everglades in the south. The trail follows the state's perimeter for much of its length, with some inland detours.

## Background on the Florida Trail (FT)

- 1,500 miles from Gulf Islands National Seashore near Pensacola to Big Cypress National Preserve in the Everglades.
- The trail is administered by the USDA Forest Service and maintained by volunteers through the Florida Trail Association.
- One of 11 National Scenic trails in the United States.



## The Model

Analyzing Parcels Based on Criteria for Planning the Florida Trail:

- Land cover data
- Future conservation land acquisitions by the state of Florida
- Existing public and private conservation lands.

The model produces a map that shows land parcels ranked based on routing suitability criteria.

# FLORIDA TRAIL PROGRAM NEEDS:

The model addresses parts of FT's 2018 Strategic Plan Implementation Guide.

Goal 2, "Complete the Trail", task 2.2.1 – Identify and systematically contact landowners of critical segments. Program needs described under this task:

- 1.) A spatial analysis of natural communities and property ownership along the Florida Trail.
- 2.) Track for sale information to create a dynamic and comprehensive list of willing sellers.
- 3.) Identify and prioritize parcels for potential acquisition.
- 4.) Identify shared acquisition priorities then rank each parcel by type, feasibility and potential timeline of acquisition.

# History of Florida Trail Land Acquisition Planning

**December 2000**

“Preferred Routing for  
the Florida National  
Scenic Trail” Document

**February 2014**

Land Acquisition  
Ownership Atlas v2

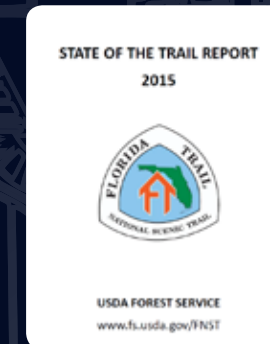


**February 2004**

Land Acquisition  
Ownership Atlas

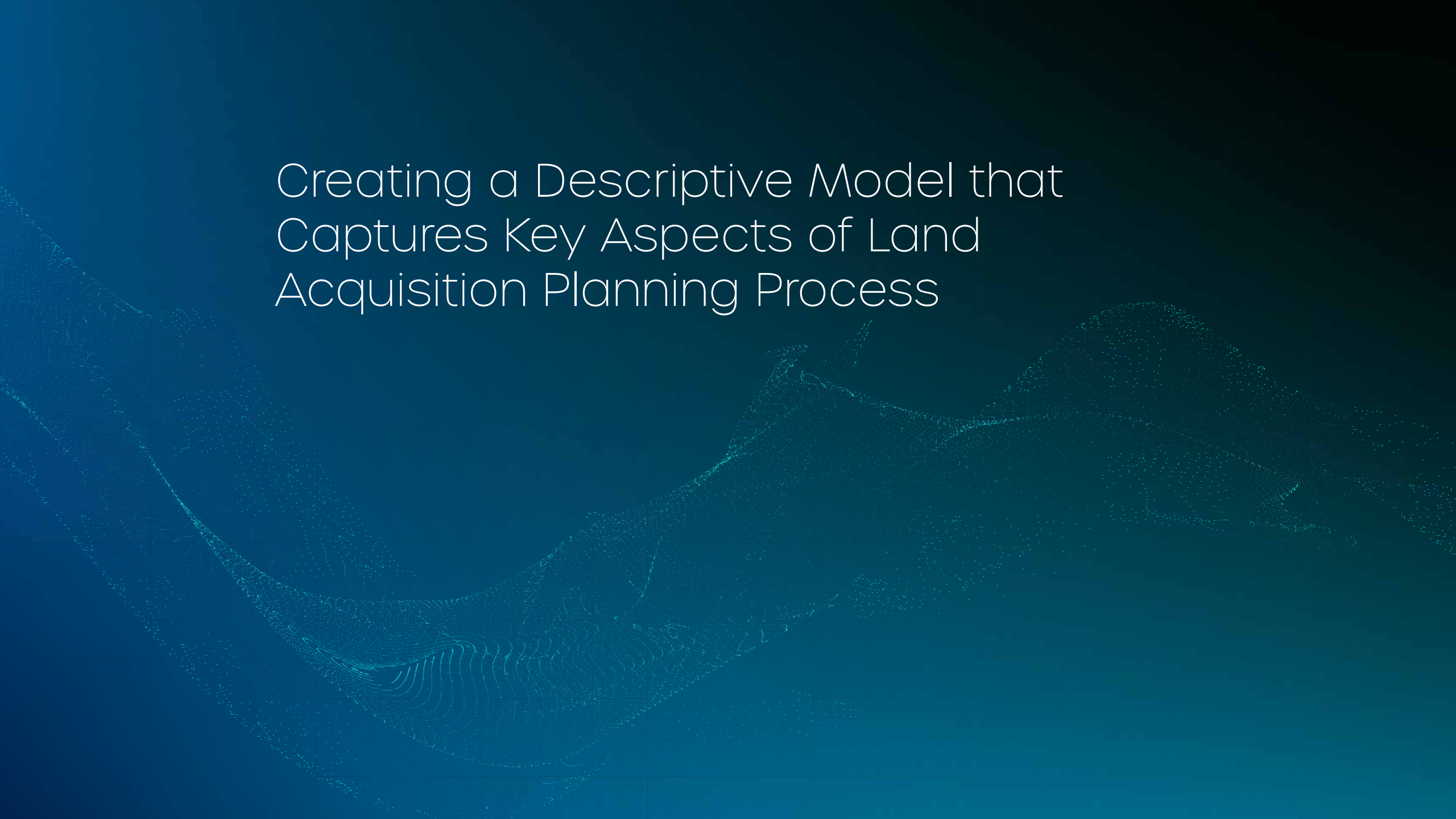
**February 2015**

FNST State of The  
Trail Report





# Creating a Descriptive Model that Captures Key Aspects of Land Acquisition Planning Process



"A simplified representation of a complex reality"









## CORRIDOR LOCATION REVIEW (CLR):

- A process to qualitatively and quantitatively analyze trail routing opportunities to identify and assess alternative trail corridors.
- Expands on the Optimal Location Review Process.
- Document the process criteria and evidence utilized to complete a trail routing recommendation.

# Corridor Location Review Criteria:



Trail Miles



Speed on  
Roadwalk



Spur Trail  
Opportunities



Total Land  
Acquisition Needs



Obstacles



Impacts to  
Landowners



Historical and  
Cultural Sites



Public  
Conservation Land



Altered Landscape



Major  
Infrastructure  
Costs



Biodiversity



Recreation  
opportunities



Amount of  
Roadwalk



Trail Towns



Potential for  
Camping



# Corridor Location Review Criteria:



Trail Miles



Speed on  
Roadwalk



Spur Trail  
Opportunities



Total Land  
Acquisition Needs



Obstacles



Impacts to  
Landowners



Historical and  
Cultural Sites



Public  
Conservation Land



Altered Landscape



Major  
Infrastructure  
Costs



Biodiversity



Recreation  
opportunities



Amount of  
Roadwalk



Trail Towns



Potential for  
Camping



## DATA SOURCES SELECTED:



Cooperative  
Land Cover



Conservation  
Lands



Florida  
Forever  
Board of  
Trustees  
Projects



Parcel Data



Trail  
Segment  
Data



Applying  
meaning to  
*land cover*  
data



## RANK 4

*Example Land Cover Type:* PINE FLATWOODS



## RANK 3

*Example Land Cover Type:* CITRUS



## RANK 2

*Example Land Cover Type:* TREE PLANTATIONS



## RANK 1

*Example Land Cover Type:* SUGARCANE



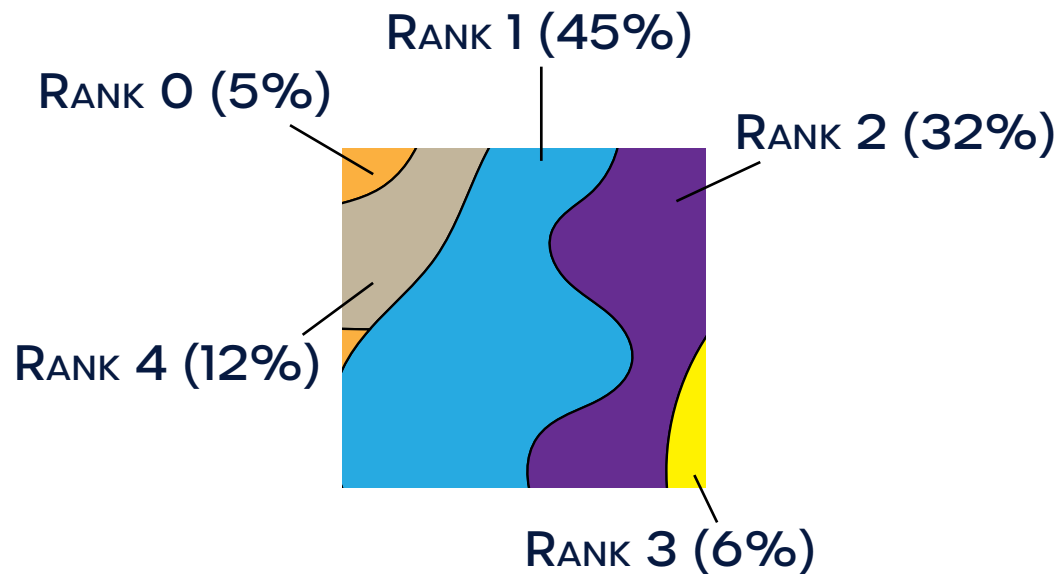
## RANK 0

*Example Land Cover Type:* ABANDONED MINING LANDS

# Combining Metrics to Create a Total Rank

1. What % of each parcel is comprised of each of these land cover rankings?
2. How close is each parcel to a Florida Forever Board of Trustees project and what priority level is that project?
3. How close is each parcel to conservation lands?

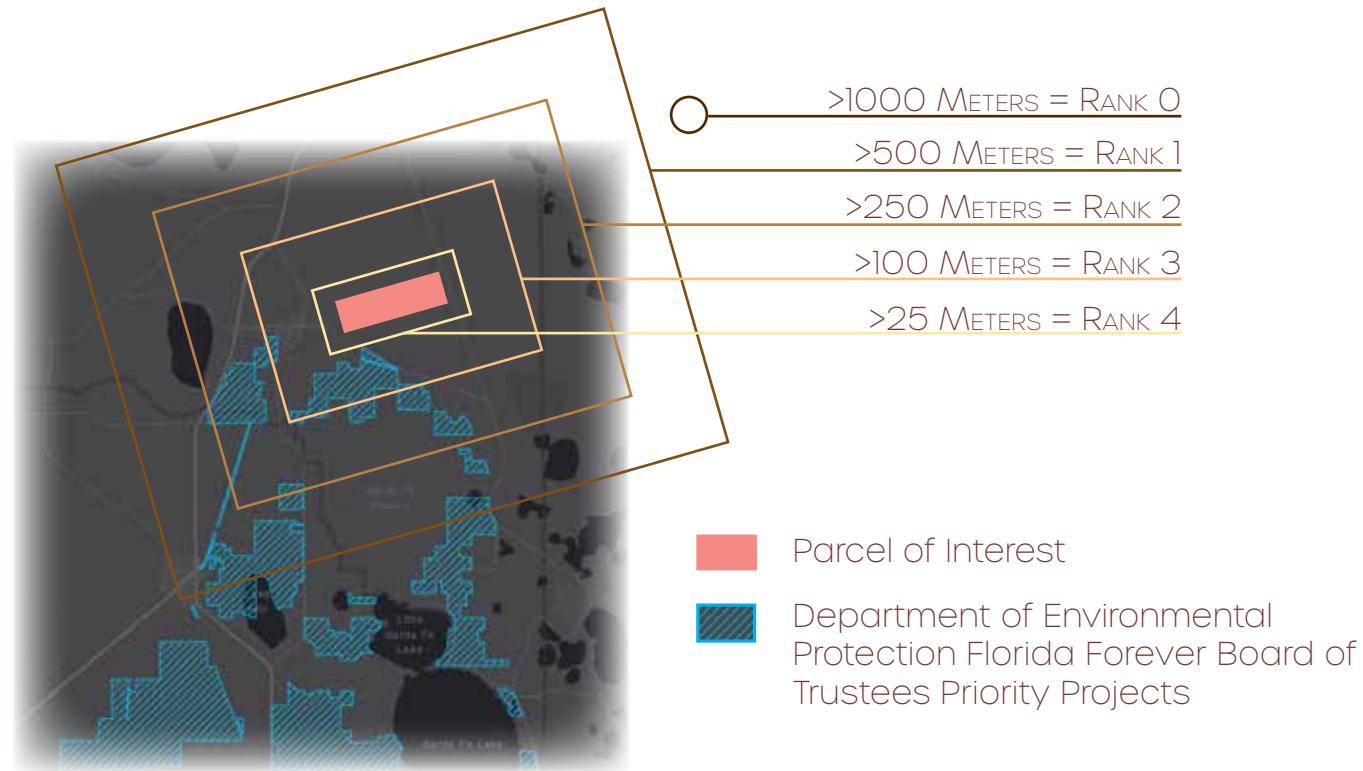
1. What % of each parcel is comprised of each of these land cover rankings?



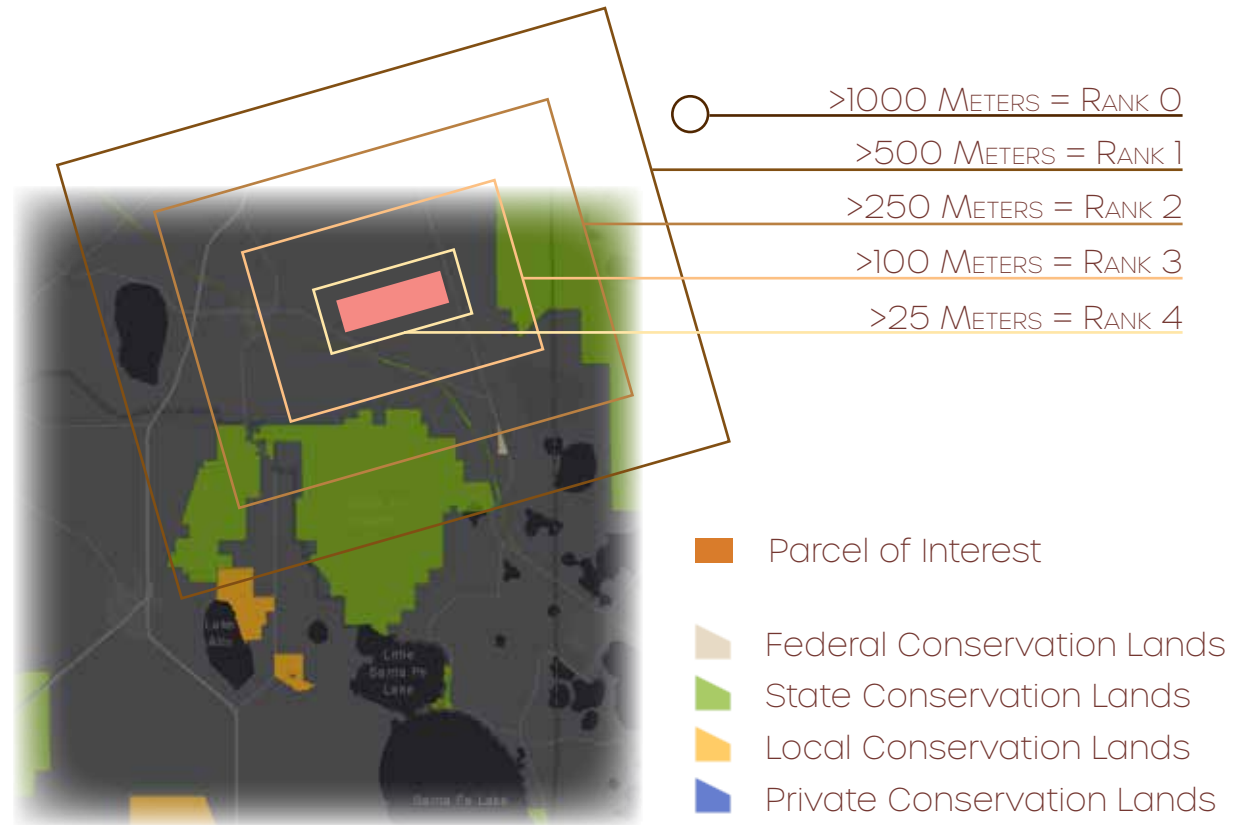
% of Rank 0(.5) + % of Rank 1 + % of Rank 2(1.5) + % of Rank 3(2) + % of Rank 4(2.5) = **Rank Order.**



## 2. How close is each parcel to a Florida Forever Board of Trustees project and what priority level is that project?



### 3. How close is each parcel to conservation lands?



# Florida Trail Land Acquisition Priority Parcel Model Big-Bend Reroute Analysis

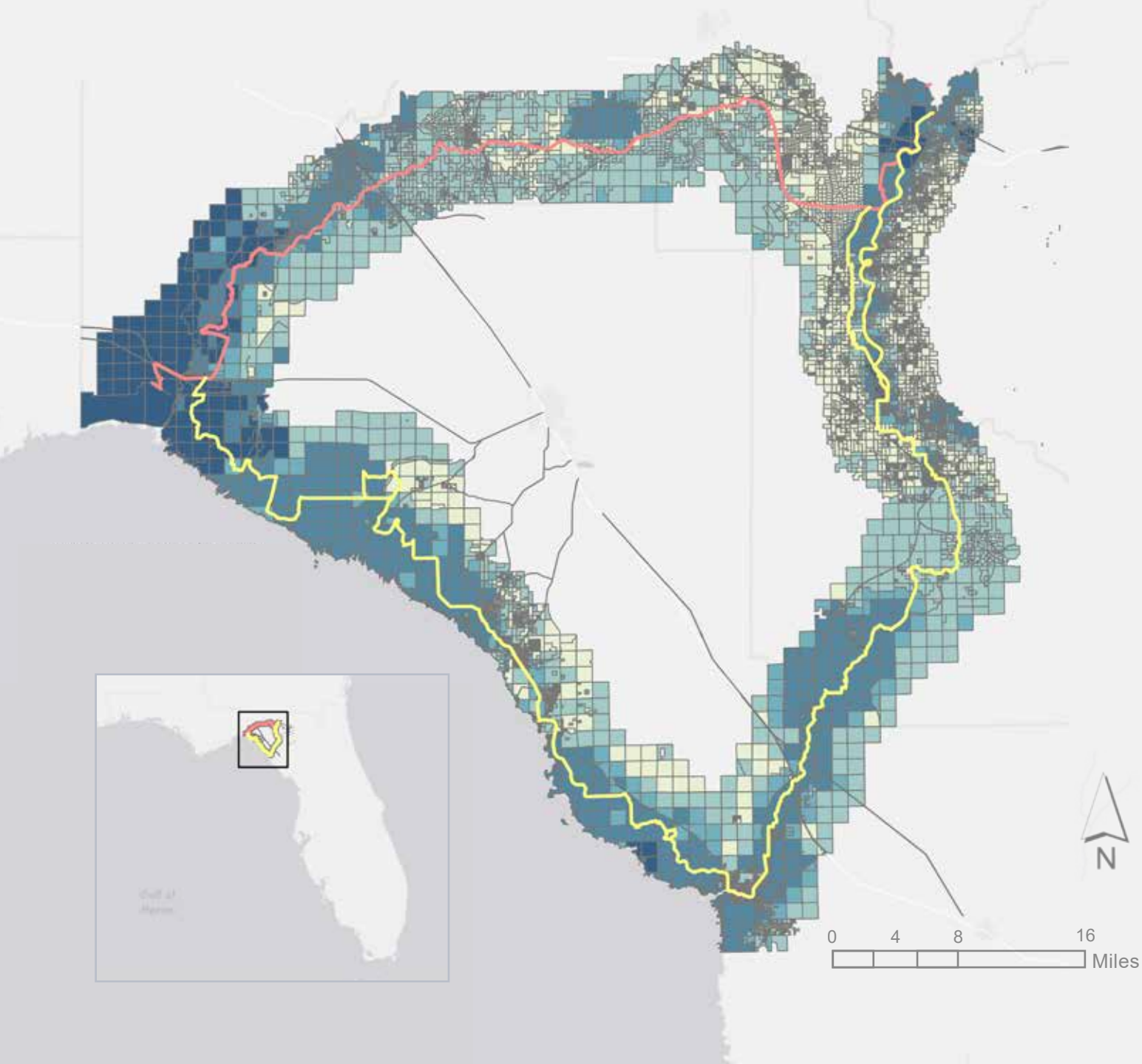
## Priority Parcel

- Least Desirable
- Less Suitable
- Suitable
- Highly Suitable
- Most Desirable

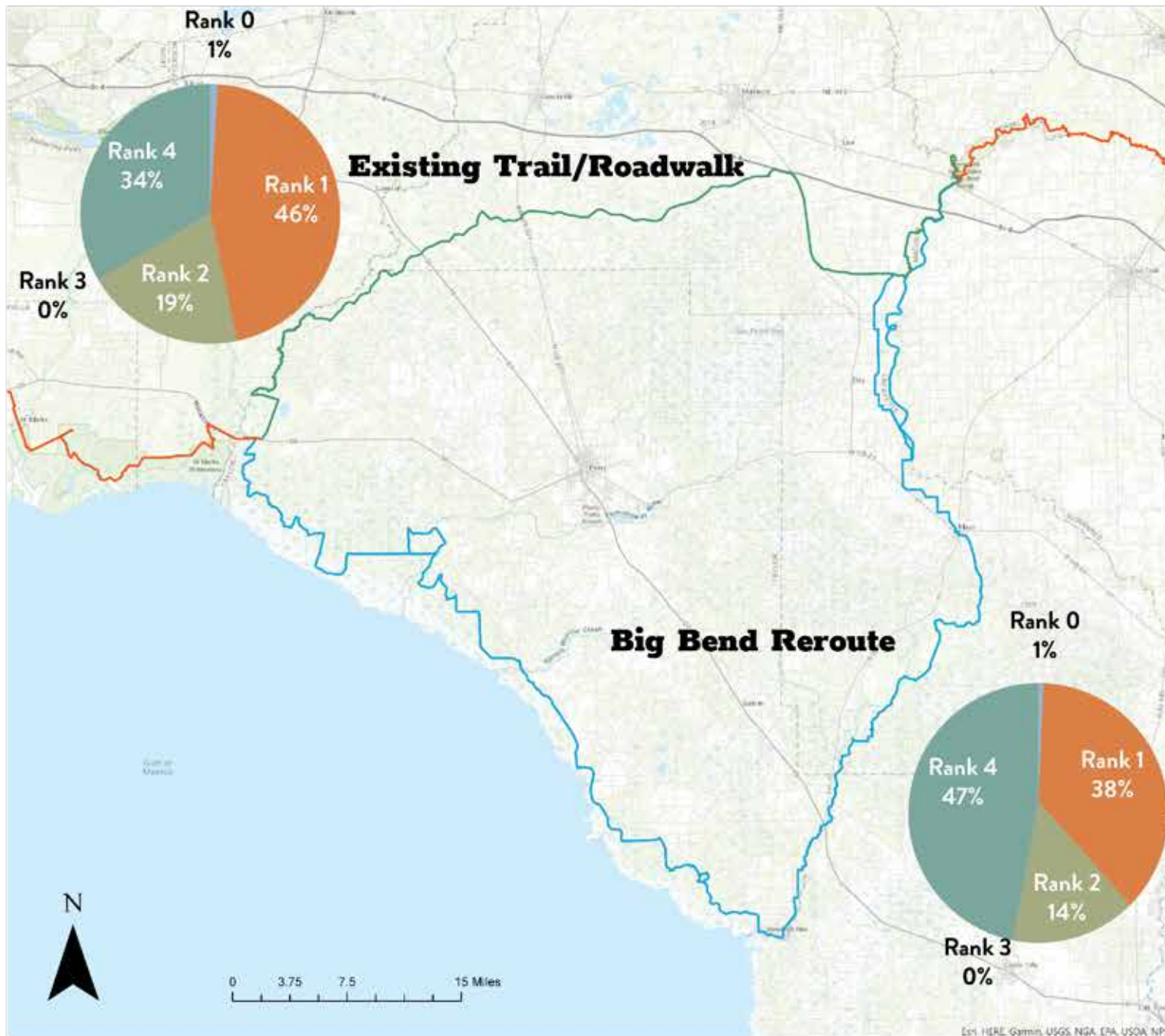
## Florida Trail Route

- Existing Route
- Proposed Reroute

Map by Haden Macbeth  
January 31, 2020  
Credits: ESRI, USDA Forest Service, Florida Department of  
Revenue







## Big Bend Reroute Land Cover Suitability Analysis

	Existing Trail/ Roadwalk	Big Bend Reroute
Rank 0: Lowest Suitability	1%	1%
Rank 1: Low Suitability	46%	38%
Rank 2: Moderate Suitability	19%	14%
Rank 3: High Suitability	0%	0%
Rank 4: Highest Suitability	34%	47%







THANKS!

HADEN *MACBETH*

HADEN.MACBETH@USDA.GOV