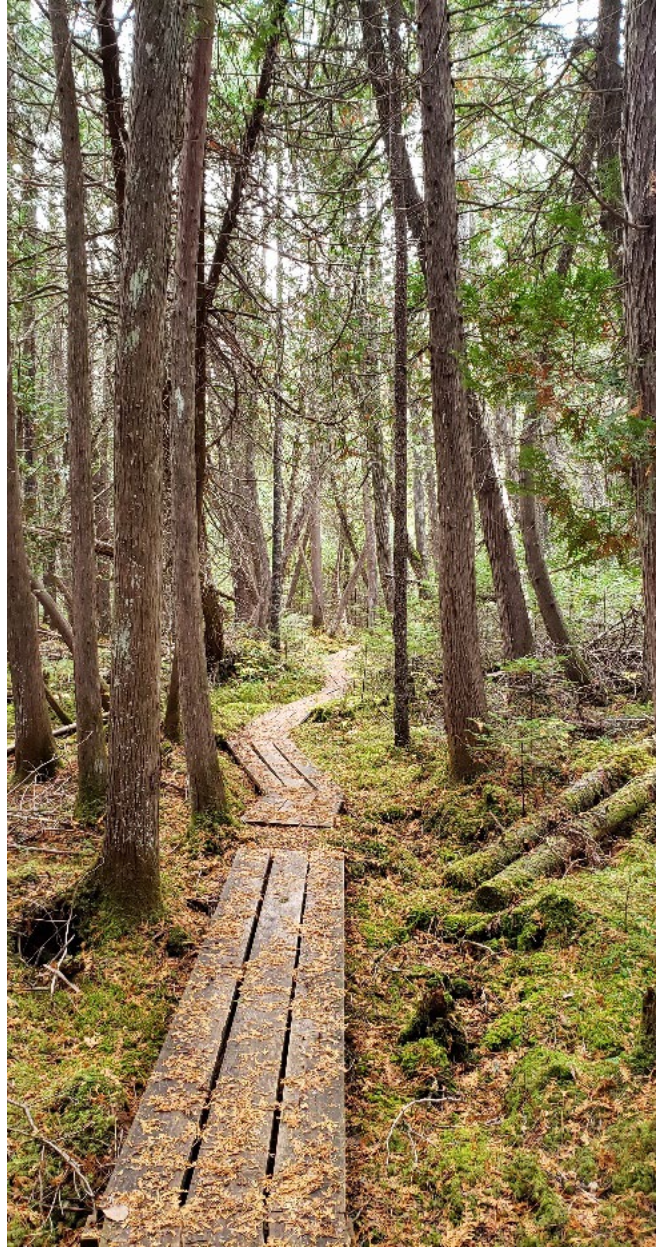


Behind the Scenes of the FWS/ACE National Trail Inventory

Peter Tomczik
U.S. Fish & Wildlife Service
Transportation Asset Management Coordinator

Katie Lyon
American Conservation Experience
USFWS National Trail Inventory Project Manager





Presentation Outline

- Introduction to US Fish and Wildlife Service Trail Network
- Exploring the Cycle 3 Trail Inventory
- Detailing the American Conservation Experience's Role, both On-the-Ground and Virtual
- Discussing how the USFWS and the NTS interact



When President Theodore Roosevelt made Florida's tiny Pelican Island a refuge for birds in 1903, he wrote the first chapter of a great American conservation success story. Following its second century, the National Wildlife Refuge System comprises 150 million acres, protected within more than 568 Refuges and thousands of small private lands that serve as waterfowl breeding and nesting areas. These are wildlife refuges in every state, and at least one within an hour's drive of every major American city, providing refuge for people as well as wildlife.

National Wildlife Refuges are far more than havens for wild plants and animals. In fact, visitors—more than 40 million each year—use wilderness on 96 percent of wildlife refuges, where they are encouraged to take part in outdoor pursuits designated by law as primary activities offered by the National Wildlife Refuge System. From environmental education and interpretation to hunting and fishing to photography and wildlife watching, refuge offer visitors a truly natural and wild outdoor experience, making wildlife the importance of taking care of our natural resources.

This map shows lands and waters managed in the National Wildlife Refuge System. Private holdings exist within some of these boundaries.

The U.S. Fish & Wildlife Service is a Federal Agency whose mission, working with others, is to conserve fish and wildlife and their habitats for the continuing benefit of the American people.

United States National Wildlife Refuge System

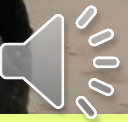


Hunting, Fishing, Wildlife Observation, Photography, Environmental Education, and Interpretation





Cycle 3.0 National Trail Inventory



American Conservation Experience (ACE)

Mission: (ACE) is a non-profit organization dedicated to providing rewarding environmental service opportunities that harness the idealism and energy of a volunteer labor force to help restore America's public lands.



ACE EPIC Program

- The Emerging Professionals In Conservation program of ACE offers individual/team placements at agency-based locations.
- This program is intended for college graduates seeking a career in natural resources or a related field.
- Individuals participate in hands-on opportunities and receive guidance from FWS employees through their term.
- Members can be eligible for AmeriCorps Education Awards and Public Land Corps Act hiring authority upon successful completion of their terms.



ACE Trail Analysis

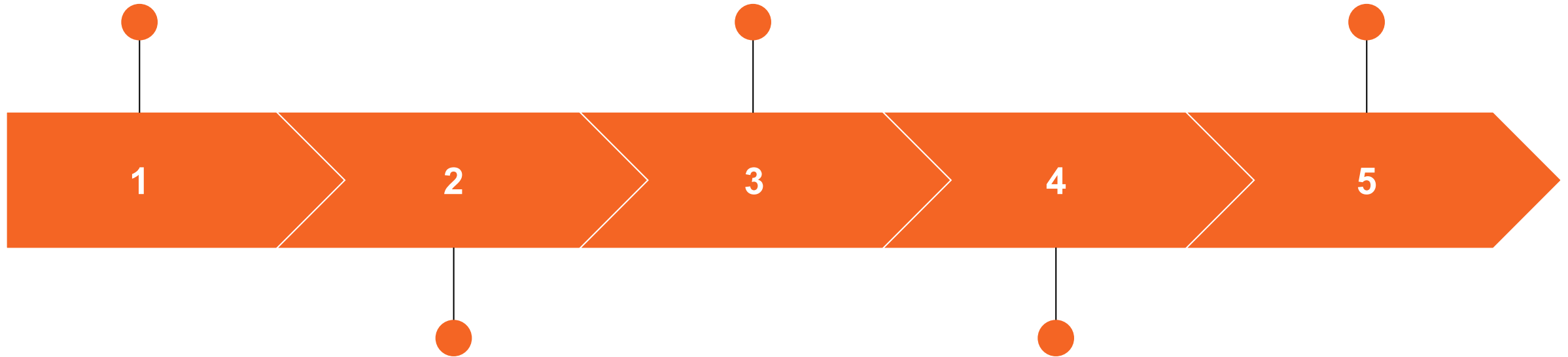
Produce list of trails to confirm with station staff

ACE Field Visit

Condition Assessment of Identified Trails

Cycle 3 TrIP Booklet

Final deliverable



Trail ID Webinar

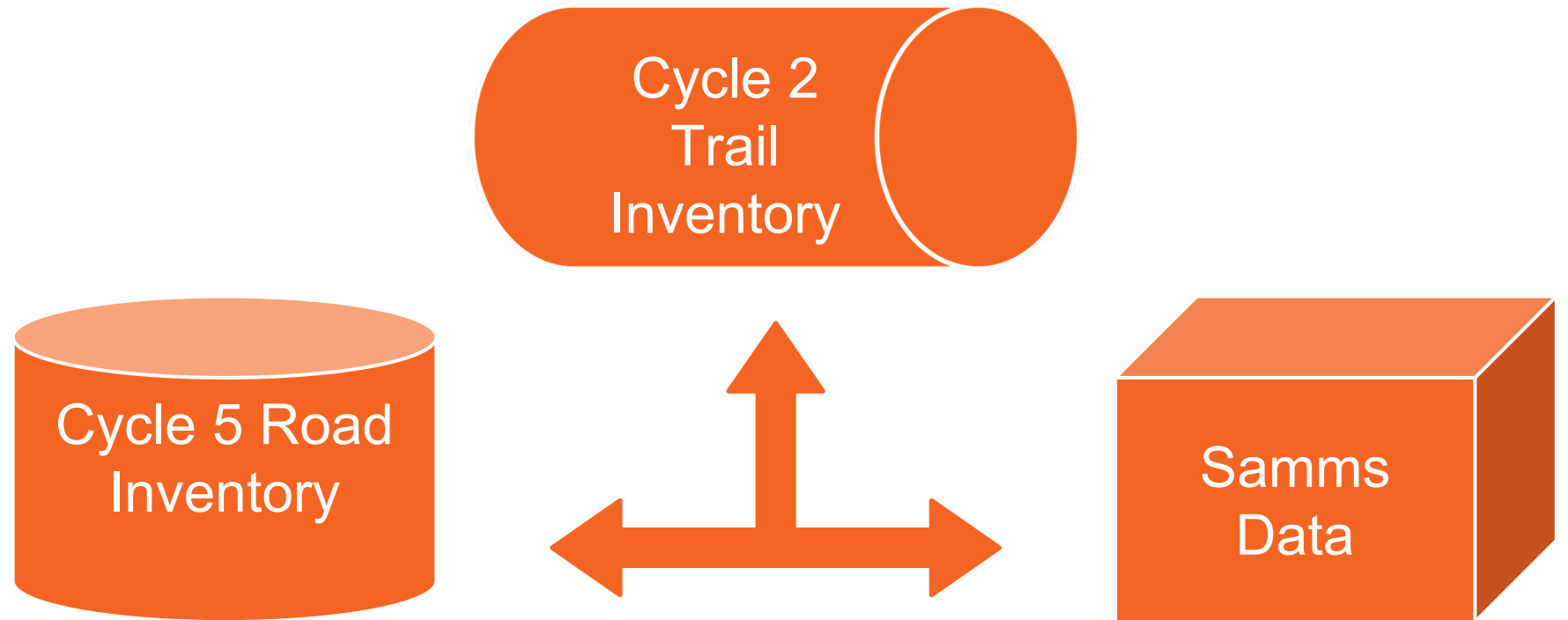
Determine final List of Trails to be assessed by ACE Field Crews

FWS Data Import

FWS imports field data to update real property records and produce Inspection Work Orders



How Trails are Identified



Among all previously inventoried trails, all roads that may have trail uses, and all current Samms RPIs related to trails, and considering the Federal Trail Data Standards, what linear assets are trails?





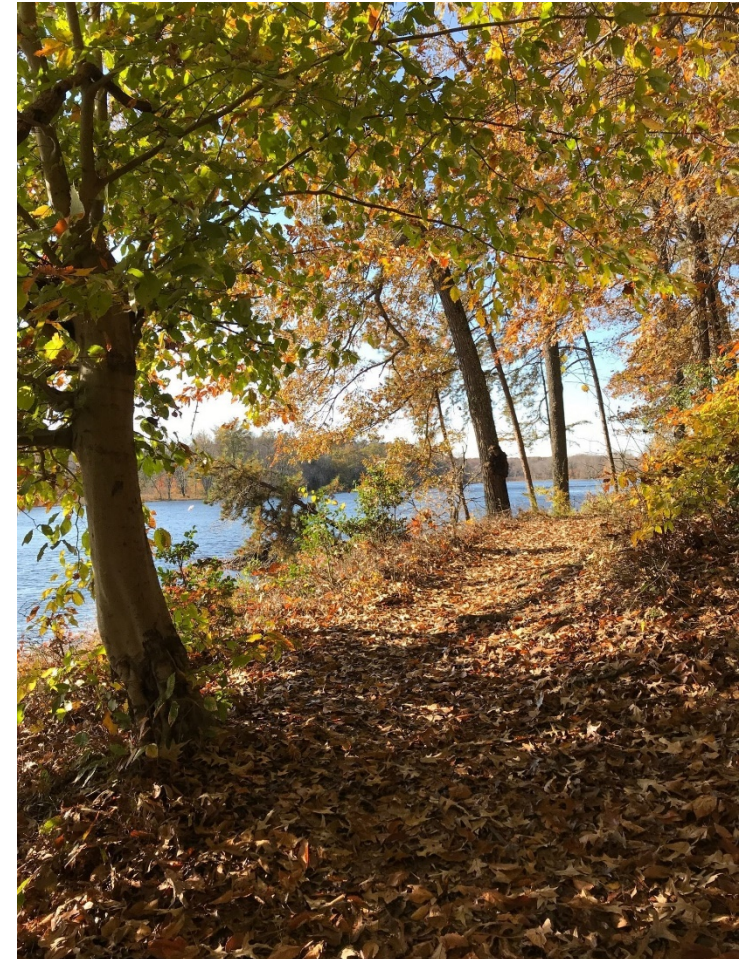
What we determine in the Trail ID meeting

Trail Identification

- Trail Name
- RPI Number (If available)
- Designed Use (Asset Code)
 - Trail Paved, Trail Unpaved, Roads
- Managed Uses
 - Hiking, Biking, Equestrian, Service Vehicles, UTVs, Skiing...

GIS (Mapping)

- Line Estimate

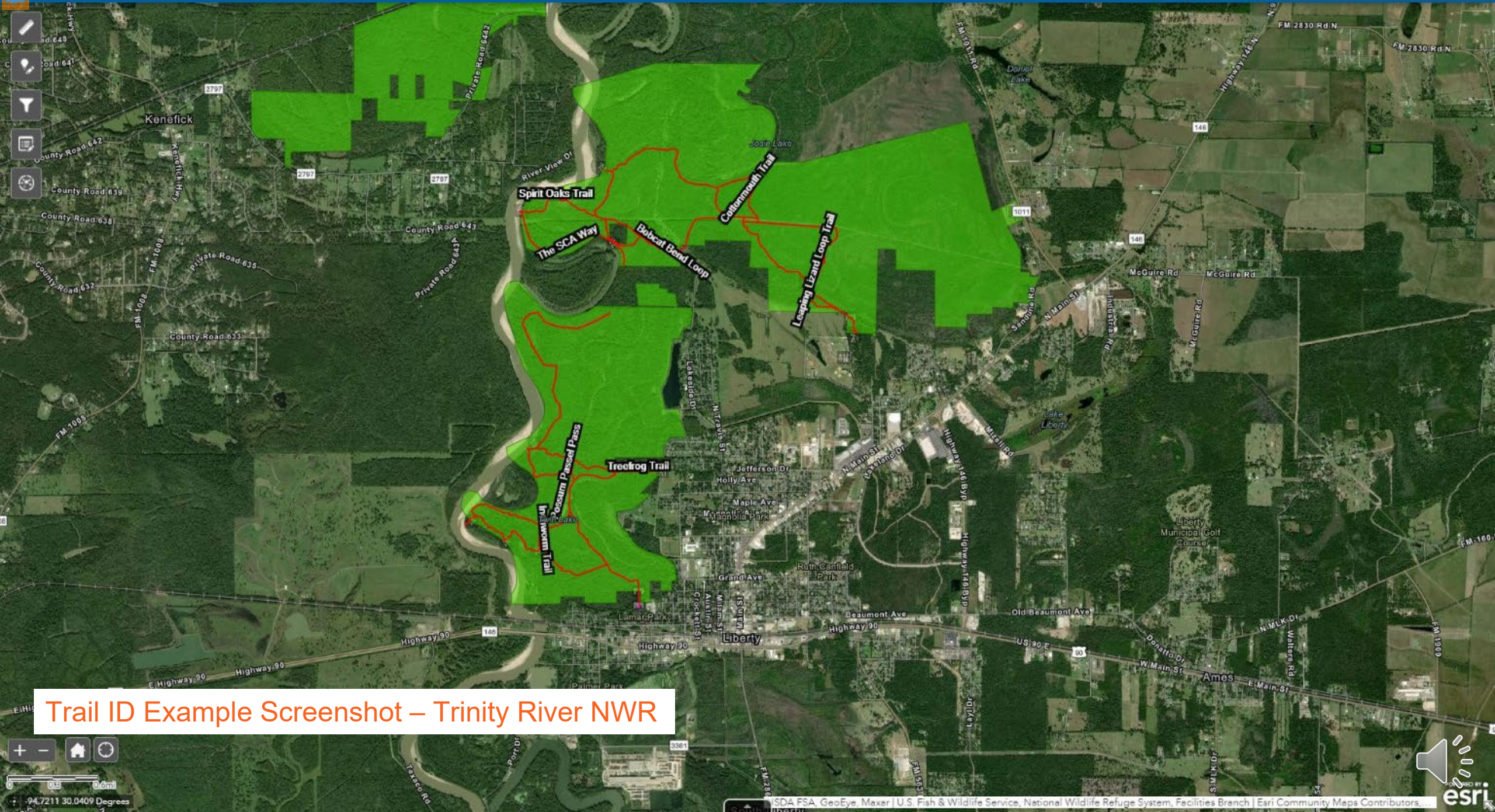




Trails Inventory Field Visit

- Locations of all trails and trail associated assets collected using high-accuracy GPS receivers paired with tablets.
- Descriptive data including condition, dimensions, and features affiliated with the trail are documented.
- ACE teams also record any deficiencies of trails or trail assets.

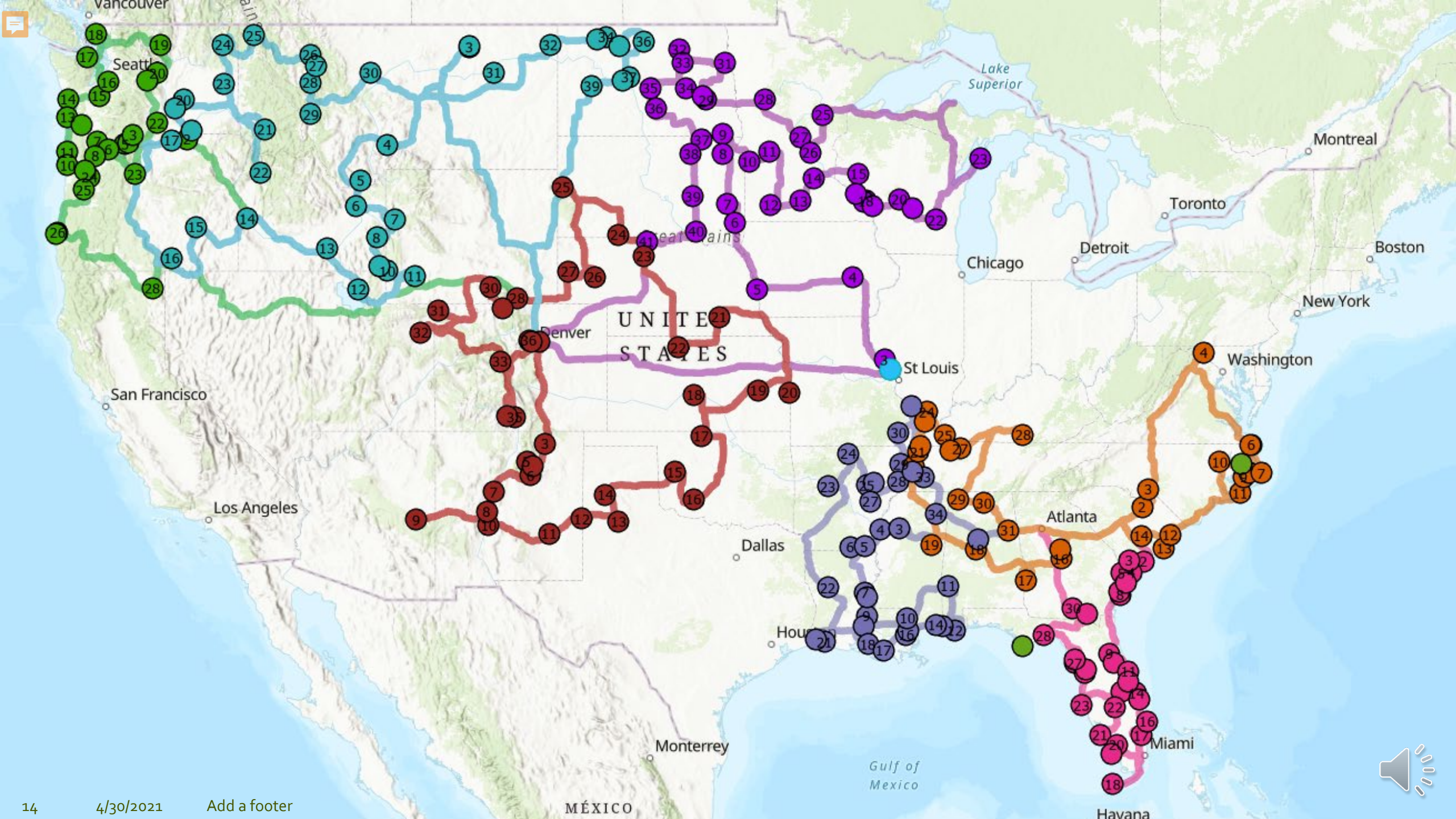




Trail ID Example Screenshot – Trinity River NWR

Challenges







NTS and the National Wildlife Refuge System

Thanks for
listening!

Are there any
questions?

